



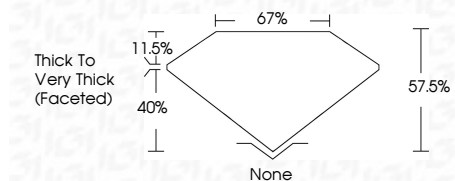
ELECTRONIC COPY

LG797637482
Report verification at igi.org



May 6, 2026
IGI Report Number **LG797637482**
Description **LABORATORY GROWN DIAMOND**
Shape and Cutting Style **PEAR BRILLIANT**
Measurements **9.15 X 5.43 X 3.12 MM**

GRADING RESULTS
Carat Weight **1.00 CARAT**
Color Grade **FANCY PINK**
Clarity Grade **VS 1**



ADDITIONAL GRADING INFORMATION
Polish **VERY GOOD**
Symmetry **VERY GOOD**
Fluorescence **SLIGHT**
Inscription(s) **IGI LG797637482**
Comments: This Laboratory Grown Diamond was created by Chemical Vapor Deposition (CVD) growth process. Indications of post-growth treatment.



May 6, 2026
IGI Report No **LG797637482**
PEAR BRILLIANT
1.00 CARAT
FANCY PINK
VS 1
9.15 X 5.43 X 3.12 MM
Color Grade
Fancy Pink
Depth 40%
Table 11.5%
Width 67%
Height 57.5%
Girdle
None
Thick to Very Thick (Faceted)
None
Polish **VERY GOOD**
Symmetry **VERY GOOD**
Fluorescence **SLIGHT**
Inscription(s)
IGI LG797637482
Comments: This Laboratory Grown Diamond was created by Chemical Vapor Deposition (CVD) growth process. Indications of post-growth treatment.

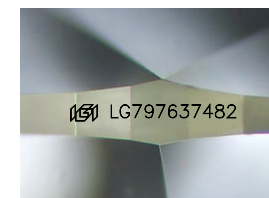
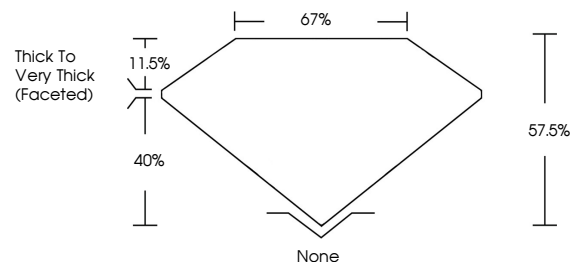
May 6, 2026
IGI Report Number **LG797637482**
Description **LABORATORY GROWN DIAMOND**
Shape and Cutting Style **PEAR BRILLIANT**
Measurements **9.15 X 5.43 X 3.12 MM**

GRADING RESULTS
Carat Weight **1.00 CARAT**
Color Grade **FANCY PINK**
Clarity Grade **VS 1**

ADDITIONAL GRADING INFORMATION
Polish **VERY GOOD**
Symmetry **VERY GOOD**
Fluorescence **SLIGHT**
Inscription(s) **IGI LG797637482**

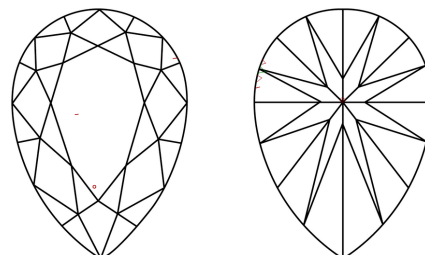
Comments: This Laboratory Grown Diamond was created by Chemical Vapor Deposition (CVD) growth process. Indications of post-growth treatment.

PROPORTIONS



Sample Image Used

CLARITY CHARACTERISTICS



KEY TO SYMBOLS

Red symbols indicate internal characteristics.
Green symbols indicate external characteristics.

COLOR

D E F G H I J Faint Very Light Light

CLARITY

FL	IF	VS ¹⁻²	VS ¹⁻²	SI ¹⁻²	I ¹⁻³
Flawless	Internally Flawless	Very Very Slightly Included	Very Slightly Included	Slightly Included	Included

