



**ELECTRONIC COPY**

LG797637478  
Report verification at igi.org



May 6, 2026

IGI Report Number **LG797637478**

Description **LABORATORY GROWN DIAMOND**

Shape and Cutting Style **PEAR BRILLIANT**

Measurements **9.05 X 5.59 X 3.22 MM**

**GRADING RESULTS**

Carat Weight **1.00 CARAT**

Color Grade **FANCY INTENSE PINK**

Clarity Grade **VVS 2**

May 6, 2026

IGI Report Number **LG797637478**

Description **LABORATORY GROWN DIAMOND**

Shape and Cutting Style **PEAR BRILLIANT**

Measurements **9.05 X 5.59 X 3.22 MM**

**GRADING RESULTS**

Carat Weight **1.00 CARAT**

Color Grade **FANCY INTENSE PINK**

Clarity Grade **VVS 2**

**ADDITIONAL GRADING INFORMATION**

Polish **EXCELLENT**

Symmetry **VERY GOOD**

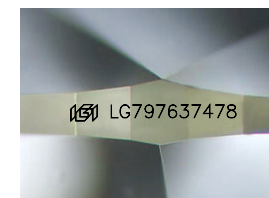
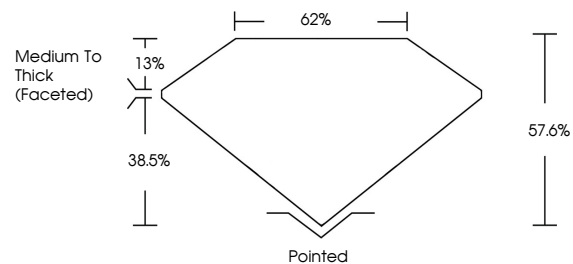
Fluorescence **SLIGHT**

Inscription(s) **IGI LG797637478**

Comments: This Laboratory Grown Diamond was created by Chemical Vapor Deposition (CVD) growth process.

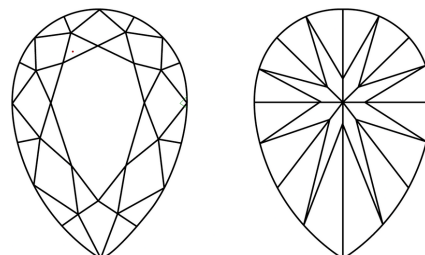
Indications of post-growth treatment.

**PROPORTIONS**



Sample Image Used

**CLARITY CHARACTERISTICS**



**KEY TO SYMBOLS**

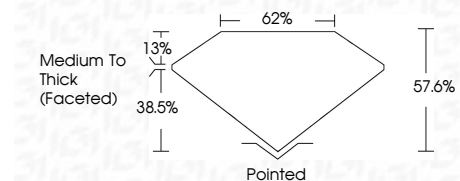
Red symbols indicate internal characteristics.  
Green symbols indicate external characteristics.

**COLOR**

D E F G H I J Faint Very Light Light

**CLARITY**

FL	IF	VVS <sup>1-2</sup>	VS <sup>1-2</sup>	SI <sup>1-2</sup>	I <sup>1-3</sup>
Flawless	Internally Flawless	Very Very Slightly Included	Very Slightly Included	Slightly Included	Included



**ADDITIONAL GRADING INFORMATION**

Polish **EXCELLENT**

Symmetry **VERY GOOD**

Fluorescence **SLIGHT**

Inscription(s) **IGI LG797637478**

Comments: This Laboratory Grown Diamond was created by Chemical Vapor Deposition (CVD) growth process. Indications of post-growth treatment.



**IGI**



May 6, 2026  
IGI Report No LG797637478  
**PEAR BRILLIANT**

**1.00 CARAT**  
Carat Weight  
**FANCY INTENSE PINK**  
Color Grade  
**VVS 2**  
Clarity Grade  
**57.6%**  
Depth  
**62%**  
Table  
**Medium To Thick (Faceted)**  
Girdle  
**Pointed**  
Culet  
**EXCELLENT**  
Polish  
**VERY GOOD**  
Symmetry  
**SLIGHT**  
Fluorescence  
Inscription(s)  
**IGI LG797637478**

Comments: This Laboratory Grown Diamond was created by Chemical Vapor Deposition (CVD) growth process. Indications of post-growth treatment.