



ELECTRONIC COPY

LG797637274
Report verification at igi.org



May 9, 2026

IGI Report Number **LG797637274**

Description **LABORATORY GROWN DIAMOND**

Shape and Cutting Style **ROUND BRILLIANT**

Measurements **6.48 - 6.50 X 3.94 MM**

GRADING RESULTS

Carat Weight **1.01 CARAT**

Color Grade **FANCY INTENSE PINK**

Clarity Grade **SI 1**

Cut Grade **IDEAL**

May 9, 2026

IGI Report Number **LG797637274**

Description **LABORATORY GROWN DIAMOND**

Shape and Cutting Style **ROUND BRILLIANT**

Measurements **6.48 - 6.50 X 3.94 MM**

GRADING RESULTS

Carat Weight **1.01 CARAT**

Color Grade **FANCY INTENSE PINK**

Clarity Grade **SI 1**

Cut Grade **IDEAL**

ADDITIONAL GRADING INFORMATION

Polish **EXCELLENT**

Symmetry **EXCELLENT**

Fluorescence **SLIGHT**

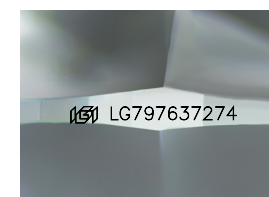
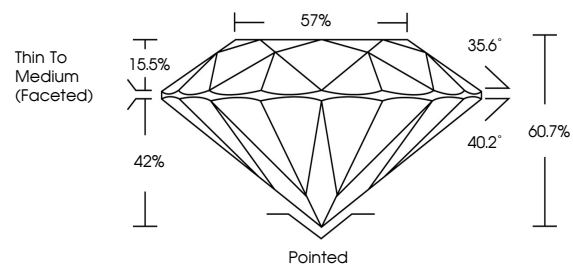
Inscription(s) **LG797637274**

Comments: This Laboratory Grown Diamond was created by Chemical Vapor Deposition (CVD) growth process.

Indications of post-growth treatment.

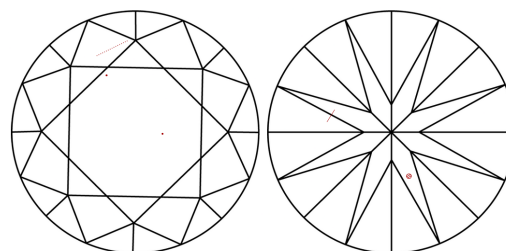
Secondary color: Brown

PROPORTIONS



Sample Image Used

CLARITY CHARACTERISTICS



KEY TO SYMBOLS

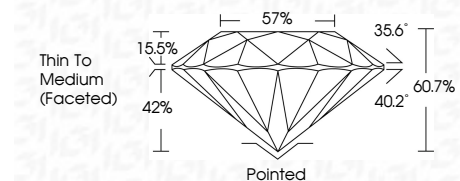
Red symbols indicate internal characteristics.
Green symbols indicate external characteristics.

COLOR

D E F G H I J Faint Very Light Light

CLARITY

FL	IF	VS ¹⁻²	VS ¹⁻²	SI ¹⁻²	I ¹⁻³
Flawless	Internally Flawless	Very Very Slightly Included	Very Slightly Included	Slightly Included	Included



ADDITIONAL GRADING INFORMATION

Polish **EXCELLENT**

Symmetry **EXCELLENT**

Fluorescence **SLIGHT**

Inscription(s) **LG797637274**

Comments: This Laboratory Grown Diamond was created by Chemical Vapor Deposition (CVD) growth process.

Indications of post-growth treatment.

Secondary color: Brown



May 9, 2026	1.01 CARAT	SI 1	Pointed
IGI Report No LG797637274	FANCY INTENSE PINK	IDEAL	EXCELLENT
ROUND BRILLIANT		60.7%	EXCELLENT
6.48 - 6.50 X 3.94 MM		57%	EXCELLENT
Carat Weight		Thin To Medium (Faceted)	SLIGHT
Color Grade			SLIGHT
Clarity Grade			IGI LG797637274
Cut Grade			
Depth			
Table			
Girdle			
Culet			
Polish			
Symmetry			
Fluorescence			
Inscription(s)			

Comments: This Laboratory Grown Diamond was created by Chemical Vapor Deposition (CVD) growth process. Indications of post-growth treatment. Secondary color: Brown