



**ELECTRONIC COPY**

LG797637230  
Report verification at igi.org



May 7, 2026

IGI Report Number **LG797637230**  
Description **LABORATORY GROWN DIAMOND**  
Shape and Cutting Style **SQUARE CUSHION MODIFIED  
BRILLIANT**

Measurements **6.97 X 6.94 X 4.54 MM**

**GRADING RESULTS**

Carat Weight **2.09 CARATS**  
Color Grade **FANCY VIVID RED**  
Clarity Grade **VS 1**

May 7, 2026  
IGI Report Number **LG797637230**  
Description **LABORATORY GROWN DIAMOND**  
Shape and Cutting Style **SQUARE CUSHION MODIFIED  
BRILLIANT**  
Measurements **6.97 X 6.94 X 4.54 MM**

**GRADING RESULTS**

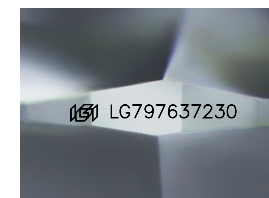
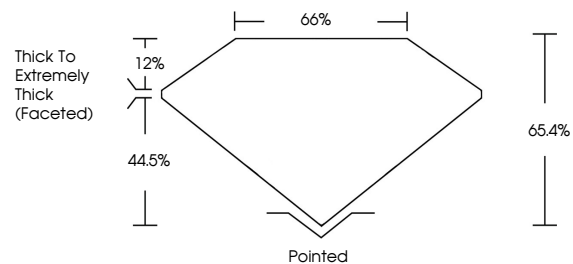
Carat Weight **2.09 CARATS**  
Color Grade **FANCY VIVID RED**  
Clarity Grade **VS 1**

**ADDITIONAL GRADING INFORMATION**

Polish **EXCELLENT**  
Symmetry **EXCELLENT**  
Fluorescence **SLIGHT**  
Inscription(s) **IGI LG797637230**

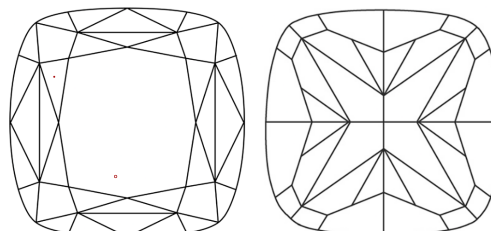
Comments: This Laboratory Grown Diamond was created by Chemical Vapor Deposition (CVD) growth process.  
Indications of post-growth treatment.

**PROPORTIONS**



Sample Image Used

**CLARITY CHARACTERISTICS**



**KEY TO SYMBOLS**

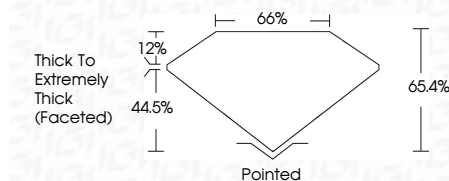
Red symbols indicate internal characteristics.  
Green symbols indicate external characteristics.

**COLOR**

D E F G H I J Faint Very Light Light

**CLARITY**

FL	IF	VS <sup>1-2</sup>	VS <sup>1-2</sup>	SI <sup>1-2</sup>	I <sup>1-3</sup>
Flawless	Internally Flawless	Very Very Slightly Included	Very Slightly Included	Slightly Included	Included



**ADDITIONAL GRADING INFORMATION**

Polish **EXCELLENT**  
Symmetry **EXCELLENT**  
Fluorescence **SLIGHT**  
Inscription(s) **IGI LG797637230**  
Comments: This Laboratory Grown Diamond was created by Chemical Vapor Deposition (CVD) growth process.  
Indications of post-growth treatment.



**IGI**



May 7, 2026  
IGI Report No. LG797637230  
**SQUARE CUSHION MODIFIED BRILLIANT**  
2.09 CARATS  
FANCY VIVID RED  
VS 1  
6.97 X 6.94 X 4.54 MM  
65.4%  
44.5%  
12%  
Thick To Extremely Thick (Faceted)  
Pointed  
EXCELLENT  
EXCELLENT  
SLIGHT  
IGI LG797637230  
Comments: This Laboratory Grown Diamond was created by Chemical Vapor Deposition (CVD) growth process.  
Indications of post-growth treatment.