



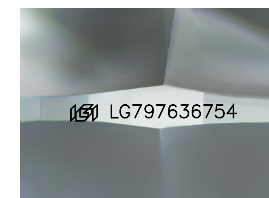
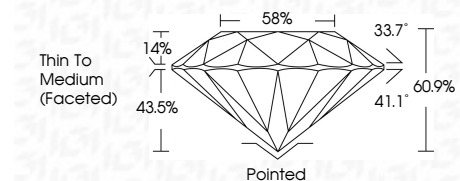
ELECTRONIC COPY

LG797636754 Report verification at igi.org



May 9, 2026 IGI Report Number LG797636754 Description LABORATORY GROWN DIAMOND Shape and Cutting Style ROUND BRILLIANT Measurements 8.27 - 8.30 X 5.04 MM

GRADING RESULTS Carat Weight 2.10 CARATS Color Grade FANCY VIVID PINK Clarity Grade VVS 2 Cut Grade IDEAL



Sample Image Used

ADDITIONAL GRADING INFORMATION Polish EXCELLENT Symmetry EXCELLENT Fluorescence SLIGHT Inscription(s) IGI LG797636754 Comments: This Laboratory Grown Diamond was created by Chemical Vapor Deposition (CVD) growth process. Indications of post-growth treatment.

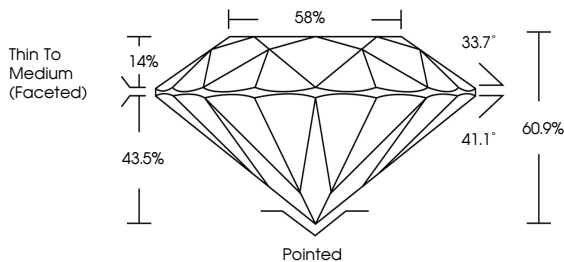


May 9, 2026 IGI Report No LG797636754 ROUND BRILLIANT 8.27 - 8.30 X 5.04 MM 2.10 CARATS FANCY VIVID PINK VVS 2 IDEAL 60.9% 58% Thin To Medium (Faceted) Pointed EXCELLENT EXCELLENT SLIGHT IGI LG797636754 Comments: This Laboratory Grown Diamond was created by Chemical Vapor Deposition (CVD) growth process. Indications of post-growth treatment.

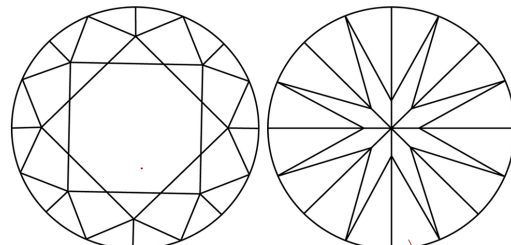
May 9, 2026 IGI Report Number LG797636754 Description LABORATORY GROWN DIAMOND Shape and Cutting Style ROUND BRILLIANT Measurements 8.27 - 8.30 X 5.04 MM GRADING RESULTS Carat Weight 2.10 CARATS Color Grade FANCY VIVID PINK Clarity Grade VVS 2 Cut Grade IDEAL ADDITIONAL GRADING INFORMATION Polish EXCELLENT Symmetry EXCELLENT Fluorescence SLIGHT Inscription(s) IGI LG797636754

Comments: This Laboratory Grown Diamond was created by Chemical Vapor Deposition (CVD) growth process. Indications of post-growth treatment.

PROPORTIONS



CLARITY CHARACTERISTICS



KEY TO SYMBOLS Red symbols indicate internal characteristics. Green symbols indicate external characteristics.

COLOR

Table with color scale: D, E, F, G, H, I, J, Faint, Very Light, Light

CLARITY

Table with clarity scale: FL, IF, VVS 1-2, VS 1-2, SI 1-2, I 1-3, Flawless, Internally Flawless, Very Very Slightly Included, Very Slightly Included, Slightly Included, Included

