



ELECTRONIC COPY

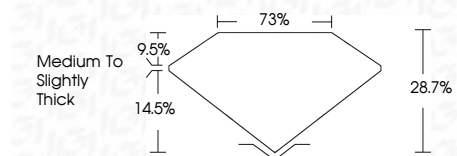
LG797636263
Report verification at igi.org



April 30, 2026
IGI Report Number **LG797636263**
Description **LABORATORY GROWN DIAMOND**
Shape and Cutting Style **EMERALD ROSE CUT**
Measurements **11.92 X 7.55 X 2.17 MM**

GRADING RESULTS

Carat Weight **2.42 CARATS**
Color Grade **F**
Clarity Grade **VVS 2**

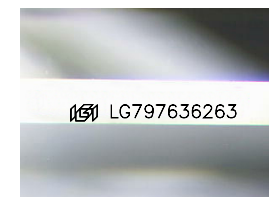


ADDITIONAL GRADING INFORMATION

Polish **EXCELLENT**
Symmetry **EXCELLENT**
Fluorescence **NONE**
Inscription(s) **(IGI) LG797636263**
Comments: This Laboratory Grown Diamond was created by Chemical Vapor Deposition (CVD) growth process. Type IIa

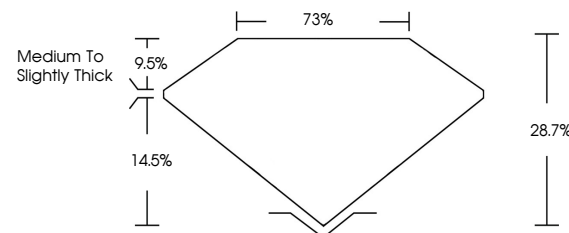


April 30, 2026
IGI Report No LG797636263
EMERALD ROSE CUT
11.92 X 7.55 X 2.17 MM
Carat Weight **2.42 CARATS**
Color Grade **F**
Clarity Grade **VVS 2**
Depth **28.7%**
Table **9.5%**
Girdle **Medium to Slightly Thick**
Culet **EXCELLENT**
Polish **EXCELLENT**
Symmetry **EXCELLENT**
Fluorescence **NONE**
Inscription(s) **(IGI) LG797636263**
Comments: This Laboratory Grown Diamond was created by Chemical Vapor Deposition (CVD) growth process. Type IIa

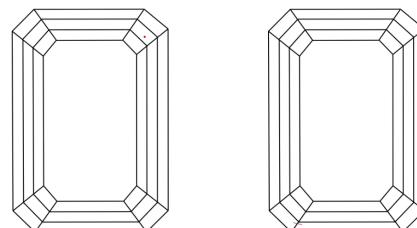


Sample Image Used

PROPORTIONS



CLARITY CHARACTERISTICS



KEY TO SYMBOLS

Red symbols indicate internal characteristics.
Green symbols indicate external characteristics.

COLOR

D E F G H I J Faint Very Light Light

CLARITY

FL	IF	VVS ¹⁻²	VS ¹⁻²	SI ¹⁻²	I ¹⁻³
Flawless	Internally Flawless	Very Very Slightly Included	Very Slightly Included	Slightly Included	Included

