



**ELECTRONIC COPY**

LG797636258  
Report verification at igi.org



April 30, 2026

IGI Report Number **LG797636258**

Description **LABORATORY GROWN DIAMOND**

Shape and Cutting Style **PRINCESS CUT**

Measurements **7.54 X 7.43 X 5.44 MM**

**GRADING RESULTS**

Carat Weight **2.78 CARATS**

Color Grade **E**

Clarity Grade **VVS 1**

April 30, 2026  
IGI Report Number **LG797636258**  
Description **LABORATORY GROWN DIAMOND**  
Shape and Cutting Style **PRINCESS CUT**  
Measurements **7.54 X 7.43 X 5.44 MM**

**GRADING RESULTS**

Carat Weight **2.78 CARATS**

Color Grade **E**

Clarity Grade **VVS 1**

**ADDITIONAL GRADING INFORMATION**

Polish **EXCELLENT**

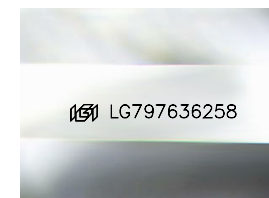
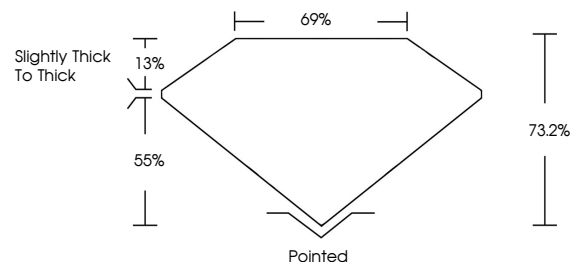
Symmetry **EXCELLENT**

Fluorescence **NONE**

Inscription(s) **IGI LG797636258**

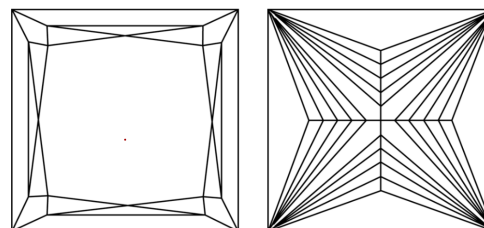
Comments: This Laboratory Grown Diamond was created by Chemical Vapor Deposition (CVD) growth process. Type IIa

**PROPORTIONS**



Sample Image Used

**CLARITY CHARACTERISTICS**



**KEY TO SYMBOLS**

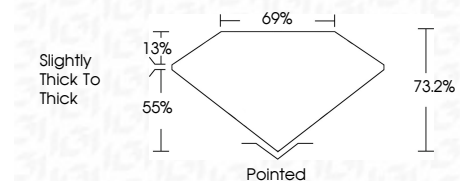
Red symbols indicate internal characteristics.  
Green symbols indicate external characteristics.

**COLOR**

D E F G H I J Faint Very Light Light

**CLARITY**

FL	IF	VVS <sup>1-2</sup>	VS <sup>1-2</sup>	SI <sup>1-2</sup>	I <sup>1-3</sup>
Flawless	Internally Flawless	Very Very Slightly Included	Very Slightly Included	Slightly Included	Included



**ADDITIONAL GRADING INFORMATION**

Polish **EXCELLENT**

Symmetry **EXCELLENT**

Fluorescence **NONE**

Inscription(s) **IGI LG797636258**

Comments: This Laboratory Grown Diamond was created by Chemical Vapor Deposition (CVD) growth process. Type IIa



**IGI**



April 30, 2026  
IGI Report No. **LG797636258**  
**PRINCESS CUT**  
**2.78 CARATS**  
E  
Carat Weight **2.78 CARATS**  
Color Grade **E**  
Clarity Grade **VVS 1**  
Depth **73.2%**  
Table **69%**  
Girdle **Slightly Thick To Thick**  
Culet **Pointed**  
Polish **EXCELLENT**  
Symmetry **EXCELLENT**  
Fluorescence **NONE**  
Inscription(s) **IGI LG797636258**  
Comments: This Laboratory Grown Diamond was created by Chemical Vapor Deposition (CVD) growth process. Type IIa