



**ELECTRONIC COPY**

LG797635496  
Report verification at igi.org



May 6, 2026

IGI Report Number **LG797635496**

Description **LABORATORY GROWN DIAMOND**

Shape and Cutting Style **PRINCESS CUT**

Measurements **8.60 X 8.51 X 6.18 MM**

**GRADING RESULTS**

Carat Weight **3.89 CARATS**

Color Grade **E**

Clarity Grade **VVS 2**

May 6, 2026  
IGI Report Number **LG797635496**  
Description **LABORATORY GROWN DIAMOND**  
Shape and Cutting Style **PRINCESS CUT**  
Measurements **8.60 X 8.51 X 6.18 MM**

**GRADING RESULTS**

Carat Weight **3.89 CARATS**

Color Grade **E**

Clarity Grade **VVS 2**

**ADDITIONAL GRADING INFORMATION**

Polish **EXCELLENT**

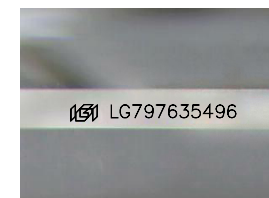
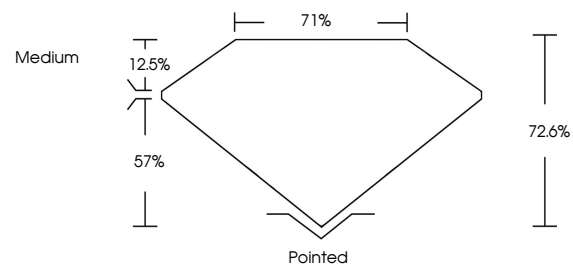
Symmetry **EXCELLENT**

Fluorescence **NONE**

Inscription(s) **IGI LG797635496**

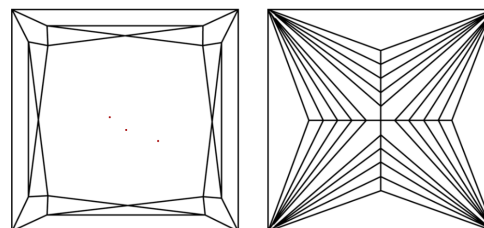
Comments: This Laboratory Grown Diamond was created by Chemical Vapor Deposition (CVD) growth process.  
Type IIa

**PROPORTIONS**



Sample Image Used

**CLARITY CHARACTERISTICS**



**KEY TO SYMBOLS**

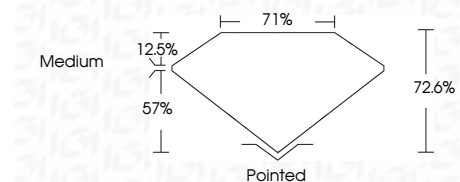
Red symbols indicate internal characteristics.  
Green symbols indicate external characteristics.

**COLOR**

D E F G H I J Faint Very Light Light

**CLARITY**

FL	IF	VVS <sup>1-2</sup>	VS <sup>1-2</sup>	SI <sup>1-2</sup>	I <sup>1-3</sup>
Flawless	Internally Flawless	Very Very Slightly Included	Very Slightly Included	Slightly Included	Included



**ADDITIONAL GRADING INFORMATION**

Polish **EXCELLENT**

Symmetry **EXCELLENT**

Fluorescence **NONE**

Inscription(s) **IGI LG797635496**

Comments: This Laboratory Grown Diamond was created by Chemical Vapor Deposition (CVD) growth process.  
Type IIa



**IGI**



May 6, 2026  
IGI Report No. **LG797635496**  
**PRINCESS CUT**

**3.89 CARATS**  
E

**8.60 X 8.51 X 6.18 MM**

Carat Weight  
Color Grade  
Clarity Grade  
Depth  
Table  
Girdle  
Medium

**VVS 2**  
**72.6%**  
**71%**  
Medium

Pointed  
EXCELLENT  
EXCELLENT  
NONE  
IGI LG797635496

Culet  
Polish  
Symmetry  
Fluorescence  
Inscription(s)

Comments: This Laboratory Grown Diamond was created by Chemical Vapor Deposition (CVD) growth process.  
Type IIa