



**ELECTRONIC COPY**

LG797632273  
Report verification at igi.org



May 9, 2026  
IGI Report Number **LG797632273**  
Description **LABORATORY GROWN DIAMOND**  
Shape and Cutting Style **MODIFIED PENTAGONAL MIXED CUT**  
Measurements **8.80 X 6.97 X 3.53 MM**  
**GRADING RESULTS**  
Carat Weight **1.04 CARAT**  
Color Grade **E**  
Clarity Grade **VVS 1**

May 9, 2026  
IGI Report Number **LG797632273**  
Description **LABORATORY GROWN DIAMOND**  
Shape and Cutting Style **MODIFIED PENTAGONAL MIXED CUT**  
Measurements **8.80 X 6.97 X 3.53 MM**

**GRADING RESULTS**

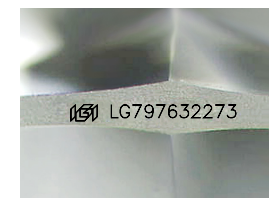
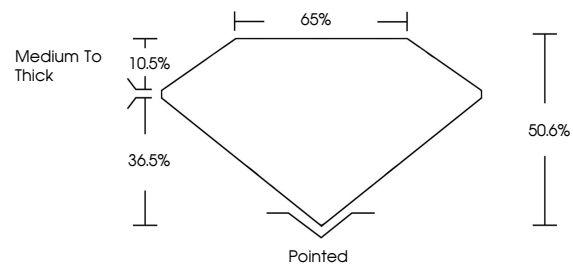
Carat Weight **1.04 CARAT**  
Color Grade **E**  
Clarity Grade **VVS 1**

**ADDITIONAL GRADING INFORMATION**

Polish **EXCELLENT**  
Symmetry **EXCELLENT**  
Fluorescence **NONE**  
Inscription(s) **IGI LG797632273**

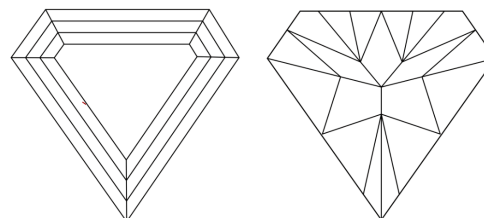
Comments: As Grown - No indication of post-growth treatment.  
This Laboratory Grown Diamond was created by High Pressure High Temperature (HPHT) growth process. Type II

**PROPORTIONS**



Sample Image Used

**CLARITY CHARACTERISTICS**



**KEY TO SYMBOLS**

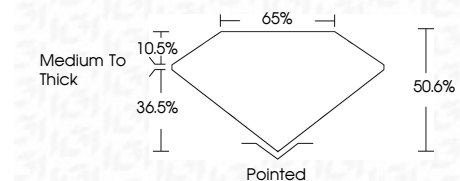
Red symbols indicate internal characteristics.  
Green symbols indicate external characteristics.

**COLOR**

D E F G H I J Faint Very Light Light

**CLARITY**

FL	IF	VVS <sup>1-2</sup>	VS <sup>1-2</sup>	SI <sup>1-2</sup>	I <sup>1-3</sup>
Flawless	Internally Flawless	Very Very Slightly Included	Very Slightly Included	Slightly Included	Included



**ADDITIONAL GRADING INFORMATION**

Polish **EXCELLENT**  
Symmetry **EXCELLENT**  
Fluorescence **NONE**  
Inscription(s) **IGI LG797632273**  
Comments: As Grown - No indication of post-growth treatment.  
This Laboratory Grown Diamond was created by High Pressure High Temperature (HPHT) growth process. Type II



**IGI**



May 9, 2026  
IGI Report No. LG797632273  
**MODIFIED PENTAGONAL MIXED CUT**  
8.80 X 6.97 X 3.53 MM  
1.04 CARAT  
E  
VVS 1  
50.6%  
65%  
Medium to Thick  
Pointed  
EXCELLENT  
EXCELLENT  
NONE  
IGI LG797632273  
Comments: As Grown - No indication of post-growth treatment.  
This Laboratory Grown Diamond was created by High Pressure High Temperature (HPHT) growth process. Type II