



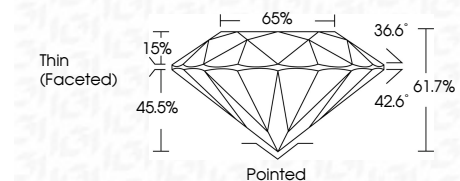
**ELECTRONIC COPY**

LG797630889  
Report verification at igi.org



May 5, 2026  
IGI Report Number **LG797630889**  
Description **LABORATORY GROWN DIAMOND**  
Shape and Cutting Style **ROUND MIXED CUT**  
Measurements **6.52 - 6.53 X 4.03 MM**

**GRADING RESULTS**  
Carat Weight **1.04 CARAT**  
Color Grade **F**  
Clarity Grade **VVS 2**



**ADDITIONAL GRADING INFORMATION**  
Polish **VERY GOOD**  
Symmetry **EXCELLENT**  
Fluorescence **NONE**  
Inscription(s) **IGI LG797630889**  
Comments: This Laboratory Grown Diamond was created by Chemical Vapor Deposition (CVD) growth process. Type IIa



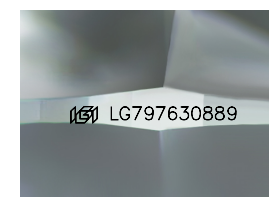
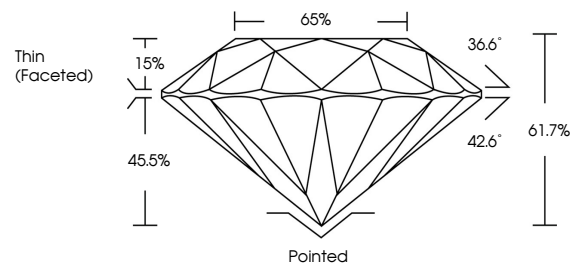
May 5, 2026  
IGI Report No. LG797630889  
**ROUND MIXED CUT**  
1.04 CARAT **F**  
Carat Weight **VVS 2**  
Color Grade **61.7%**  
Clarity Grade **65%**  
Depth  
Table  
Girdle  
Thin (Faceted)  
Culet  
Polish **Pointed**  
Symmetry **VERY GOOD**  
Fluorescence **EXCELLENT**  
Inscription(s) **NONE**  
IGI LG797630889  
Comments: This Laboratory Grown Diamond was created by Chemical Vapor Deposition (CVD) growth process. Type IIa

May 5, 2026  
IGI Report Number **LG797630889**  
Description **LABORATORY GROWN DIAMOND**  
Shape and Cutting Style **ROUND MIXED CUT**  
Measurements **6.52 - 6.53 X 4.03 MM**

**GRADING RESULTS**  
Carat Weight **1.04 CARAT**  
Color Grade **F**  
Clarity Grade **VVS 2**

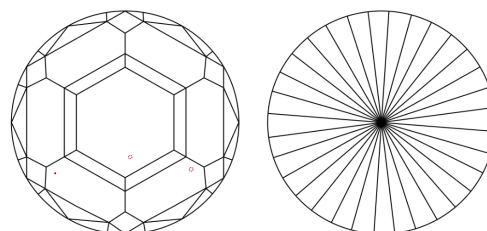
**ADDITIONAL GRADING INFORMATION**  
Polish **VERY GOOD**  
Symmetry **EXCELLENT**  
Fluorescence **NONE**  
Inscription(s) **IGI LG797630889**  
Comments: This Laboratory Grown Diamond was created by Chemical Vapor Deposition (CVD) growth process. Type IIa

**PROPORTIONS**



Sample Image Used

**CLARITY CHARACTERISTICS**



**KEY TO SYMBOLS**

Red symbols indicate internal characteristics.  
Green symbols indicate external characteristics.

**COLOR**

D E F G H I J Faint Very Light Light

**CLARITY**

FL	IF	VVS <sup>1-2</sup>	VS <sup>1-2</sup>	SI <sup>1-2</sup>	I <sup>1-3</sup>
Flawless	Internally Flawless	Very Very Slightly Included	Very Slightly Included	Slightly Included	Included

