



ELECTRONIC COPY

LG797630445
Report verification at igi.org



May 12, 2026

IGI Report Number **LG797630445**

Description **LABORATORY GROWN DIAMOND**

Shape and Cutting Style **MARQUISE BRILLIANT**

Measurements **11.15 X 5.67 X 3.50 MM**

GRADING RESULTS

Carat Weight **1.26 CARAT**

Color Grade **E**

Clarity Grade **VVS 2**

May 12, 2026

IGI Report Number **LG797630445**

Description **LABORATORY GROWN DIAMOND**

Shape and Cutting Style **MARQUISE BRILLIANT**

Measurements **11.15 X 5.67 X 3.50 MM**

GRADING RESULTS

Carat Weight **1.26 CARAT**

Color Grade **E**

Clarity Grade **VVS 2**

ADDITIONAL GRADING INFORMATION

Polish **EXCELLENT**

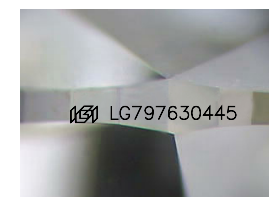
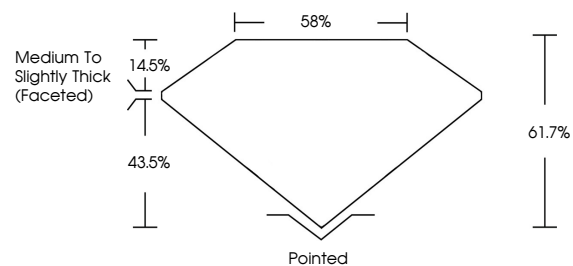
Symmetry **EXCELLENT**

Fluorescence **NONE**

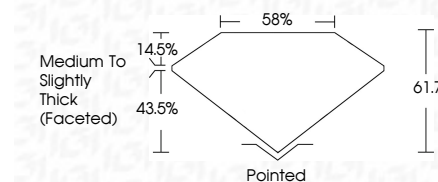
Inscription(s) **IGI LG797630445**

Comments: This Laboratory Grown Diamond was created by Chemical Vapor Deposition (CVD) growth process.
Type IIa

PROPORTIONS



Sample Image Used



COLOR

D E F G H I J Faint Very Light Light

CLARITY

FL	IF	VS ¹⁻²	VS ¹⁻²	SI ¹⁻²	I ¹⁻³
Flawless	Internally Flawless	Very Very Slightly Included	Very Slightly Included	Slightly Included	Included

ADDITIONAL GRADING INFORMATION

Polish **EXCELLENT**

Symmetry **EXCELLENT**

Fluorescence **NONE**

Inscription(s) **IGI LG797630445**

Comments: This Laboratory Grown Diamond was created by Chemical Vapor Deposition (CVD) growth process.
Type IIa



IGI



May 12, 2026
IGI Report No LG797630445
MARQUISE BRILLIANT

11.15 X 5.67 X 3.50 MM

1.26 CARAT
E

VVS 2

61.7%
85%

Medium to Slightly Thick (Faceted)

Pointed
EXCELLENT
EXCELLENT
NONE
IGI LG797630445

Comments: This Laboratory Grown Diamond was created by Chemical Vapor Deposition (CVD) growth process.
Type IIa