



ELECTRONIC COPY

LG797628936
Report verification at igi.org



May 4, 2026

IGI Report Number **LG797628936**

Description **LABORATORY GROWN DIAMOND**

Shape and Cutting Style **HEART BRILLIANT**

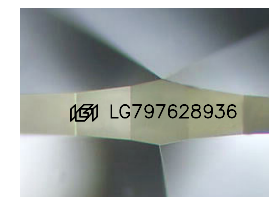
Measurements **6.36 X 7.02 X 4.20 MM**

GRADING RESULTS

Carat Weight **1.07 CARAT**

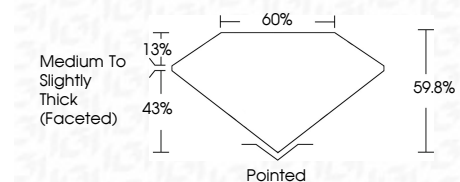
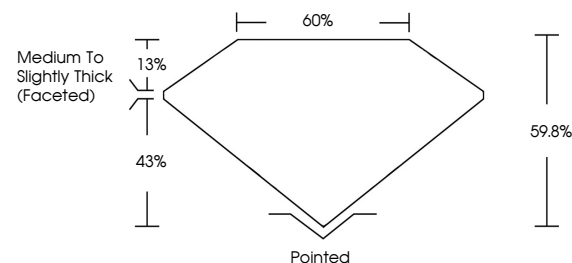
Color Grade **E**

Clarity Grade **VS 1**

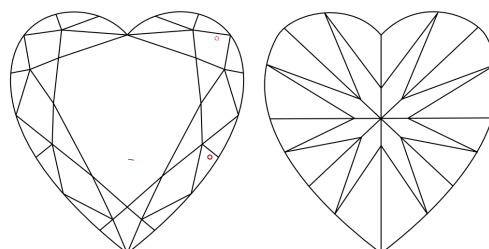


Sample Image Used

PROPORTIONS



CLARITY CHARACTERISTICS



KEY TO SYMBOLS

Red symbols indicate internal characteristics.
Green symbols indicate external characteristics.

COLOR

D E F G H I J Faint Very Light Light

CLARITY

| FL | IF | VS ¹⁻² | VS ¹⁻² | SI ¹⁻² | I ¹⁻³ |
|----------|---------------------|-----------------------------|------------------------|-------------------|------------------|
| Flawless | Internally Flawless | Very Very Slightly Included | Very Slightly Included | Slightly Included | Included |

ADDITIONAL GRADING INFORMATION

Polish **EXCELLENT**

Symmetry **EXCELLENT**

Fluorescence **NONE**

Inscription(s) **IGI LG797628936**

Comments: This Laboratory Grown Diamond was created by Chemical Vapor Deposition (CVD) growth process. Type IIa



IGI

| | | | | | | | | | | | | |
|-----------------|---------------------------|-------------|---------------|-------|-------|--------|------------------------------------|---------|-----------|--------------|----------------|---|
| May 4, 2026 | IGI Report No LG797628936 | 1.07 CARAT | E | VS 1 | 60% | 43% | Medium to Slightly Thick (Faceted) | Pointed | EXCELLENT | EXCELLENT | NONE | IGI LG797628936 |
| HEART BRILLIANT | 6.36 X 7.02 X 4.20 MM | Color Grade | Clarity Grade | Table | Depth | Girdle | Culet | Polish | Symmetry | Fluorescence | Inscription(s) | Comments: This Laboratory Grown Diamond was created by Chemical Vapor Deposition (CVD) growth process. Type IIa |