



ELECTRONIC COPY

LG797627456
Report verification at igi.org



April 30, 2026
IGI Report Number **LG797627456**
Description **LABORATORY GROWN DIAMOND**
Shape and Cutting Style **MODIFIED MARQUISE STEP CUT**
Measurements **8.20 X 5.27 X 3.48 MM**
GRADING RESULTS
Carat Weight **1.09 CARAT**
Color Grade **D**
Clarity Grade **VVS 2**

LABORATORY GROWN DIAMOND REPORT

April 30, 2026
IGI Report Number **LG797627456**
Description **LABORATORY GROWN DIAMOND**
Shape and Cutting Style **MODIFIED MARQUISE STEP CUT**
Measurements **8.20 X 5.27 X 3.48 MM**

GRADING RESULTS

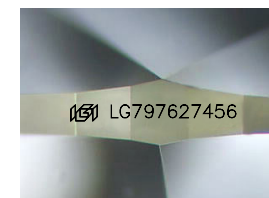
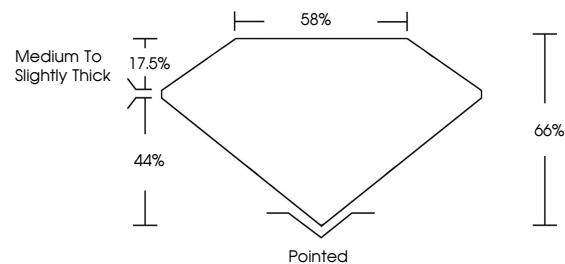
Carat Weight **1.09 CARAT**
Color Grade **D**
Clarity Grade **VVS 2**

ADDITIONAL GRADING INFORMATION

Polish **EXCELLENT**
Symmetry **EXCELLENT**
Fluorescence **NONE**
Inscription(s) **IGI LG797627456**

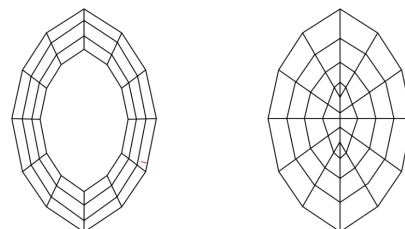
Comments: This Laboratory Grown Diamond was created by Chemical Vapor Deposition (CVD) growth process. Type IIa

PROPORTIONS



Sample Image Used

CLARITY CHARACTERISTICS



KEY TO SYMBOLS

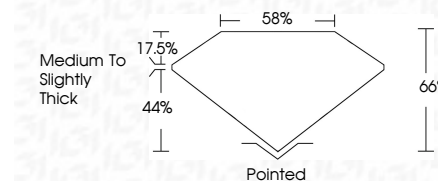
Red symbols indicate internal characteristics.
Green symbols indicate external characteristics.

COLOR

D E F G H I J Faint Very Light Light

CLARITY

FL	IF	VVS ¹⁻²	VS ¹⁻²	SI ¹⁻²	I ¹⁻³
Flawless	Internally Flawless	Very Very Slightly Included	Very Slightly Included	Slightly Included	Included



ADDITIONAL GRADING INFORMATION

Polish **EXCELLENT**
Symmetry **EXCELLENT**
Fluorescence **NONE**
Inscription(s) **IGI LG797627456**
Comments: This Laboratory Grown Diamond was created by Chemical Vapor Deposition (CVD) growth process. Type IIa



April 30, 2026
IGI Report No LG797627456
MODIFIED MARQUISE STEP CUT
8.20 X 5.27 X 3.48 MM
1.09 CARAT
D
VVS 2
66%
85%
Medium to Slightly Thick
Pointed
EXCELLENT
EXCELLENT
NONE
IGI LG797627456
Comments: This Laboratory Grown Diamond was created by Chemical Vapor Deposition (CVD) growth process. Type IIa