



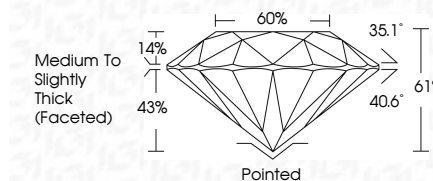
ELECTRONIC COPY

LG797626204 Report verification at igi.org



May 5, 2026 IGI Report Number LG797626204 Description LABORATORY GROWN DIAMOND Shape and Cutting Style ROUND BRILLIANT Measurements 7.40 - 7.44 X 4.52 MM

GRADING RESULTS Carat Weight 1.55 CARAT Color Grade D Clarity Grade VVS 1 Cut Grade IDEAL

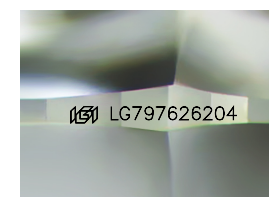


ADDITIONAL GRADING INFORMATION Polish EXCELLENT Symmetry EXCELLENT Fluorescence NONE Inscription(s) LG797626204 Comments: HEARTS & ARROWS As Grown - No indication of post-growth treatment. This Laboratory Grown Diamond was created by High Pressure High Temperature (HPHT) growth process. Type II



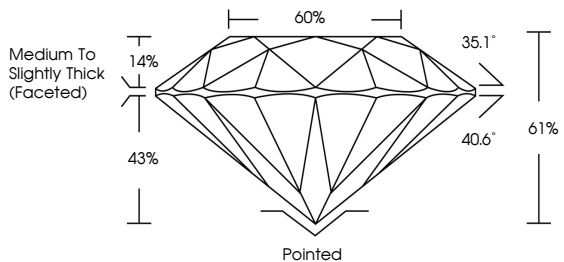
May 5, 2026 IGI Report No LG797626204 ROUND BRILLIANT 7.40 - 7.44 X 4.52 MM 1.55 CARAT D VVS 1 IDEAL 61% 66% Medium To Slightly Thick (Faceted) Pointed EXCELLENT EXCELLENT NONE LG797626204

Comments: HEARTS & ARROWS As Grown - No indication of post-growth treatment. This Laboratory Grown Diamond was created by High Pressure High Temperature (HPHT) growth process. Type II

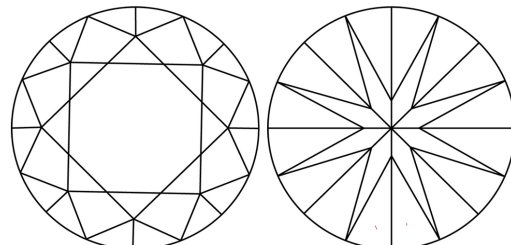


Sample Image Used

PROPORTIONS



CLARITY CHARACTERISTICS



KEY TO SYMBOLS Red symbols indicate internal characteristics. Green symbols indicate external characteristics.



COLOR

Color scale table with categories D, E, F, G, H, I, J, Faint, Very Light, Light

CLARITY

Clarity scale table with categories FL, IF, VVS 1-2, VS 1-2, SI 1-2, I 1-3, Flawless, Internally Flawless, Very Very Slightly Included, Very Slightly Included, Slightly Included, Included



May 5, 2026 IGI Report Number LG797626204 Description LABORATORY GROWN DIAMOND Shape and Cutting Style ROUND BRILLIANT Measurements 7.40 - 7.44 X 4.52 MM

GRADING RESULTS Carat Weight 1.55 CARAT Color Grade D Clarity Grade VVS 1 Cut Grade IDEAL

ADDITIONAL GRADING INFORMATION Polish EXCELLENT Symmetry EXCELLENT Fluorescence NONE Inscription(s) LG797626204

Comments: HEARTS & ARROWS As Grown - No indication of post-growth treatment. This Laboratory Grown Diamond was created by High Pressure High Temperature (HPHT) growth process. Type II