



ELECTRONIC COPY

LG797625825 Report verification at igi.org



May 8, 2026 IGI Report Number LG797625825 Description LABORATORY GROWN DIAMOND Shape and Cutting Style CUT CORNERED RECTANGULAR MODIFIED BRILLIANT Measurements 9.28 X 6.54 X 4.47 MM GRADING RESULTS Carat Weight 2.51 CARATS Color Grade FANCY INTENSE PINK Clarity Grade VS 1

May 8, 2026 IGI Report Number LG797625825 Description LABORATORY GROWN DIAMOND Shape and Cutting Style CUT CORNERED RECTANGULAR MODIFIED BRILLIANT Measurements 9.28 X 6.54 X 4.47 MM

GRADING RESULTS

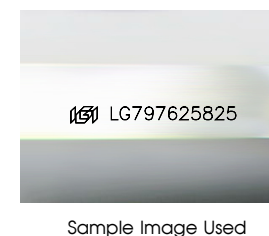
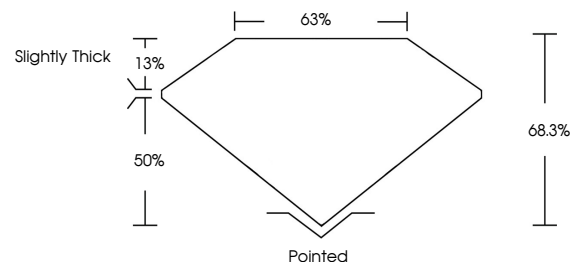
Carat Weight 2.51 CARATS Color Grade FANCY INTENSE PINK Clarity Grade VS 1

ADDITIONAL GRADING INFORMATION

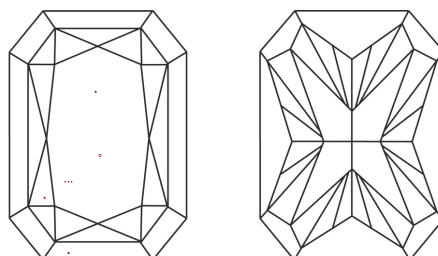
Polish EXCELLENT Symmetry EXCELLENT Fluorescence SLIGHT Inscription(s) LG797625825

Comments: This Laboratory Grown Diamond was created by Chemical Vapor Deposition (CVD) growth process. Indications of post-growth treatment.

PROPORTIONS



CLARITY CHARACTERISTICS



KEY TO SYMBOLS

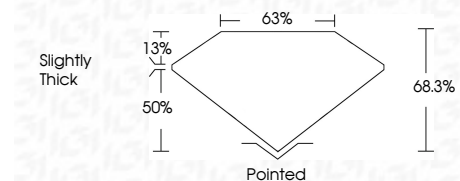
Red symbols indicate internal characteristics. Green symbols indicate external characteristics.

COLOR

D E F G H I J Faint Very Light Light

CLARITY

FL IF VS 1-2 VS 2-3 SI 1-2 SI 2-3 I 1-3 Flawless Internally Flawless Very Very Slightly Included Very Slightly Included Slightly Included Included



ADDITIONAL GRADING INFORMATION

Polish EXCELLENT Symmetry EXCELLENT Fluorescence SLIGHT Inscription(s) LG797625825 Comments: This Laboratory Grown Diamond was created by Chemical Vapor Deposition (CVD) growth process. Indications of post-growth treatment.



May 8, 2026 IGI Report No LG797625825 CUT CORNERED RECT. MODIFIED BRILLIANT 9.28 X 6.54 X 4.47 MM 2.51 CARATS FANCY INTENSE PINK VS 1 68.3% 63% Slightly Thick Pointed EXCELLENT EXCELLENT SLIGHT LG797625825 Comments: This Laboratory Grown Diamond was created by Chemical Vapor Deposition (CVD) growth process. Indications of post-growth treatment.