



ELECTRONIC COPY

LG797625003 Report verification at igi.org



May 9, 2026 IGI Report Number LG797625003 Description LABORATORY GROWN DIAMOND Shape and Cutting Style CUT CORNERED RECTANGULAR MODIFIED BRILLIANT Measurements 16.65 X 12.09 X 8.24 MM GRADING RESULTS Carat Weight 16.49 CARATS Color Grade FANCY INTENSE YELLOW Clarity Grade VS 1

May 9, 2026 IGI Report Number LG797625003 Description LABORATORY GROWN DIAMOND Shape and Cutting Style CUT CORNERED RECTANGULAR MODIFIED BRILLIANT Measurements 16.65 X 12.09 X 8.24 MM

GRADING RESULTS

Carat Weight 16.49 CARATS Color Grade FANCY INTENSE YELLOW Clarity Grade VS 1

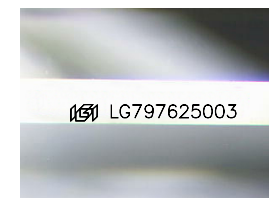
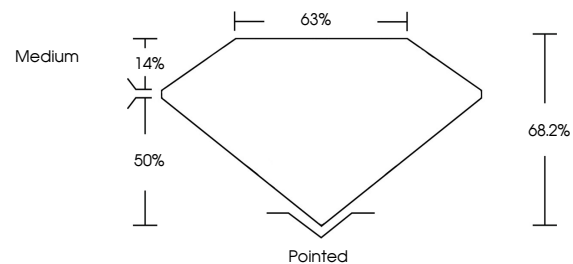
ADDITIONAL GRADING INFORMATION

Polish EXCELLENT Symmetry EXCELLENT Fluorescence NONE Inscription(s) LG797625003

Comments: This Laboratory Grown Diamond was created by Chemical Vapor Deposition (CVD) growth process.

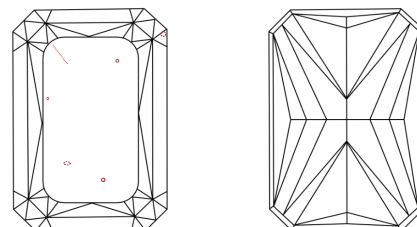
Secondary color: Grey

PROPORTIONS



Sample Image Used

CLARITY CHARACTERISTICS



KEY TO SYMBOLS

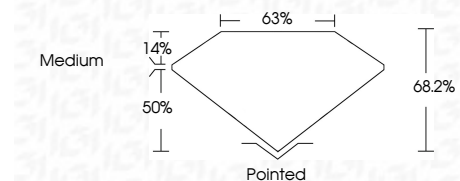
Red symbols indicate internal characteristics. Green symbols indicate external characteristics.

COLOR

D E F G H I J Faint Very Light Light

CLARITY

FL IF VS 1-2 VS 2-3 SI 1-2 SI 2-3 I 1-3 Flawless Internally Flawless Very Very Slightly Included Very Slightly Included Slightly Included Included



ADDITIONAL GRADING INFORMATION

Polish EXCELLENT Symmetry EXCELLENT Fluorescence NONE Inscription(s) LG797625003 Comments: This Laboratory Grown Diamond was created by Chemical Vapor Deposition (CVD) growth process. Secondary color: Grey



May 9, 2026 IGI Report No LG797625003 CUT CORNERED RECT. MODIFIED BRILLIANT 16.49 CARATS 16.49 CARATS FANCY INTENSE YELLOW VS 1 68.2% 63% Medium Pointed EXCELLENT EXCELLENT NONE NONE LG797625003 Comments: This Laboratory Grown Diamond was created by Chemical Vapor Deposition (CVD) growth process. Secondary color: Grey