



**ELECTRONIC COPY**

LG797623561  
Report verification at igi.org



May 4, 2026

IGI Report Number **LG797623561**

Description **LABORATORY GROWN DIAMOND**

Shape and Cutting Style **PRINCESS CUT**

Measurements **9.81 X 9.49 X 6.78 MM**

**GRADING RESULTS**

Carat Weight **5.46 CARATS**

Color Grade **D**

Clarity Grade **VS 2**

May 4, 2026  
IGI Report Number **LG797623561**  
Description **LABORATORY GROWN DIAMOND**  
Shape and Cutting Style **PRINCESS CUT**  
Measurements **9.81 X 9.49 X 6.78 MM**

**GRADING RESULTS**

Carat Weight **5.46 CARATS**

Color Grade **D**

Clarity Grade **VS 2**

**ADDITIONAL GRADING INFORMATION**

Polish **EXCELLENT**

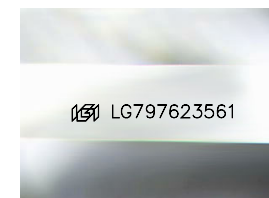
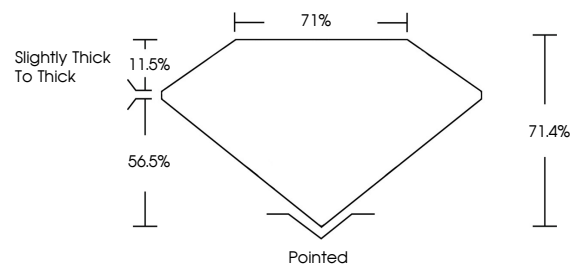
Symmetry **EXCELLENT**

Fluorescence **NONE**

Inscription(s) **IGI LG797623561**

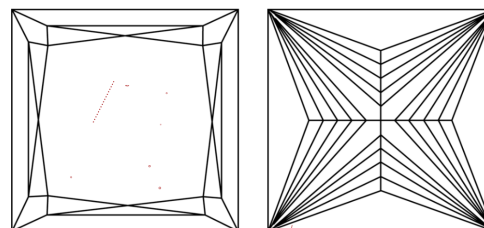
Comments: This Laboratory Grown Diamond was created by Chemical Vapor Deposition (CVD) growth process. Type IIa

**PROPORTIONS**



Sample Image Used

**CLARITY CHARACTERISTICS**



**KEY TO SYMBOLS**

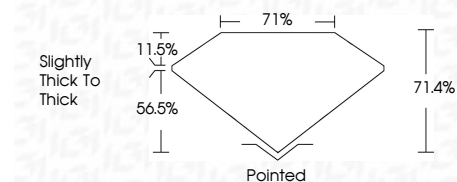
Red symbols indicate internal characteristics.  
Green symbols indicate external characteristics.

**COLOR**

D E F G H I J Faint Very Light Light

**CLARITY**

FL	IF	VS <sup>1-2</sup>	VS <sup>1-2</sup>	SI <sup>1-2</sup>	I <sup>1-3</sup>
Flawless	Internally Flawless	Very Very Slightly Included	Very Slightly Included	Slightly Included	Included



**ADDITIONAL GRADING INFORMATION**

Polish **EXCELLENT**

Symmetry **EXCELLENT**

Fluorescence **NONE**

Inscription(s) **IGI LG797623561**

Comments: This Laboratory Grown Diamond was created by Chemical Vapor Deposition (CVD) growth process. Type IIa



**IGI**



May 4, 2026  
IGI Report No LG797623561  
**PRINCESS CUT**

**5.46 CARATS**  
D  
VS 2  
71.4%  
71%  
Slightly Thick To Thick

**9.81 X 9.49 X 6.78 MM**  
Color Grade  
Clarity Grade  
Table  
Girdle  
Pointed  
Polish  
Symmetry  
Fluorescence  
Inscription(s)

**EXCELLENT  
EXCELLENT  
NONE  
IGI LG797623561**

Comments: This Laboratory Grown Diamond was created by Chemical Vapor Deposition (CVD) growth process. Type IIa