



**ELECTRONIC COPY**

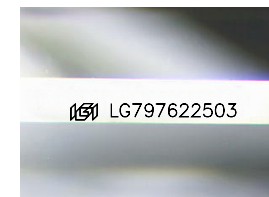
LG797622503  
Report verification at igi.org



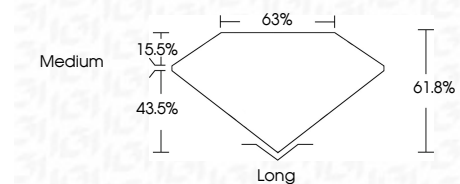
May 4, 2026  
IGI Report Number **LG797622503**  
Description **LABORATORY GROWN DIAMOND**  
Shape and Cutting Style **EMERALD CUT**  
Measurements **8.03 X 5.37 X 3.32 MM**

**GRADING RESULTS**

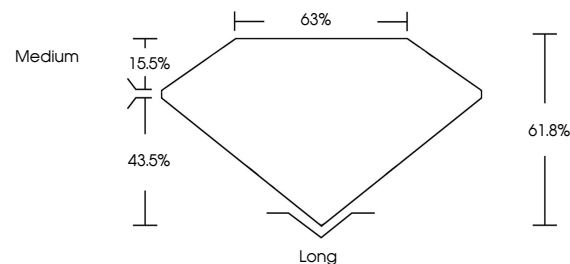
Carat Weight **1.50 CARAT**  
Color Grade **D**  
Clarity Grade **VVS 2**



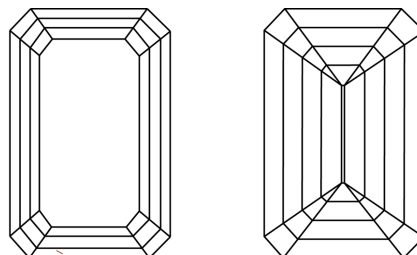
Sample Image Used



**PROPORTIONS**



**CLARITY CHARACTERISTICS**



**KEY TO SYMBOLS**

Red symbols indicate internal characteristics.  
Green symbols indicate external characteristics.

**COLOR**

D E F G H I J Faint Very Light Light

**CLARITY**

FL	IF	VVS <sup>1-2</sup>	VS <sup>1-2</sup>	SI <sup>1-2</sup>	I <sup>1-3</sup>
Flawless	Internally Flawless	Very Very Slightly Included	Very Slightly Included	Slightly Included	Included

**ADDITIONAL GRADING INFORMATION**

Polish **EXCELLENT**  
Symmetry **EXCELLENT**  
Fluorescence **NONE**  
Inscription(s) **(IGI) LG797622503**  
Comments: As Grown - No indication of post-growth treatment.  
This Laboratory Grown Diamond was created by High Pressure High Temperature (HPHT) growth process.  
Type II



**IGI**



May 4, 2026  
IGI Report No LG797622503  
**EMERALD CUT**  
8.03 X 5.37 X 3.32 MM  
1.50 CARAT  
D  
Color Grade  
VVS 2  
61.8%  
43.5%  
Medium  
Long  
EXCELLENT  
EXCELLENT  
NONE  
None  
(IGI) LG797622503  
Comments: As Grown - No indication of post-growth treatment.  
This Laboratory Grown Diamond was created by High Pressure High Temperature (HPHT) growth process.  
Type II