



**ELECTRONIC COPY**

LG797620944  
Report verification at igi.org



May 2, 2026

IGI Report Number **LG797620944**

Description **LABORATORY GROWN DIAMOND**

Shape and Cutting Style **ROUND BRILLIANT**

Measurements **6.32 - 6.38 X 4.00 MM**

**GRADING RESULTS**

Carat Weight **1.00 CARAT**

Color Grade **E**

Clarity Grade **VVS 2**

Cut Grade **EXCELLENT**

May 2, 2026

IGI Report Number **LG797620944**

Description **LABORATORY GROWN DIAMOND**

Shape and Cutting Style **ROUND BRILLIANT**

Measurements **6.32 - 6.38 X 4.00 MM**

**GRADING RESULTS**

Carat Weight **1.00 CARAT**

Color Grade **E**

Clarity Grade **VVS 2**

Cut Grade **EXCELLENT**

**ADDITIONAL GRADING INFORMATION**

Polish **EXCELLENT**

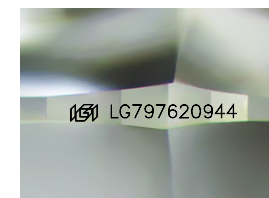
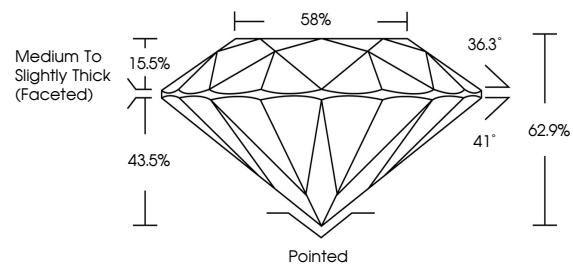
Symmetry **EXCELLENT**

Fluorescence **NONE**

Inscription(s) **LG797620944**

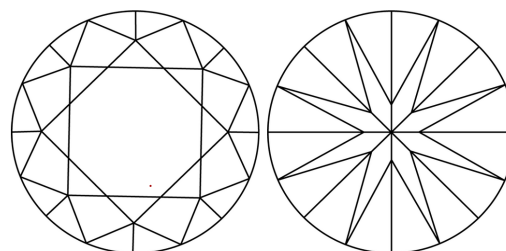
Comments: This Laboratory Grown Diamond was created by Chemical Vapor Deposition (CVD) growth process. Type IIa

**PROPORTIONS**



Sample Image Used

**CLARITY CHARACTERISTICS**



**KEY TO SYMBOLS**

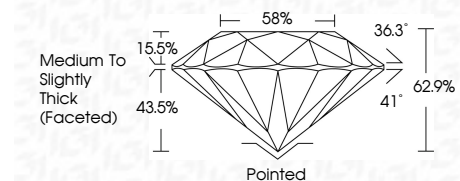
Red symbols indicate internal characteristics.  
Green symbols indicate external characteristics.

**COLOR**

D E F G H I J Faint Very Light Light

**CLARITY**

| FL       | IF                  | VVS <sup>1-2</sup>          | VS <sup>1-2</sup>      | SI <sup>1-2</sup> | I <sup>1-3</sup> |
|----------|---------------------|-----------------------------|------------------------|-------------------|------------------|
| Flawless | Internally Flawless | Very Very Slightly Included | Very Slightly Included | Slightly Included | Included         |



**ADDITIONAL GRADING INFORMATION**

Polish **EXCELLENT**

Symmetry **EXCELLENT**

Fluorescence **NONE**

Inscription(s) **LG797620944**

Comments: This Laboratory Grown Diamond was created by Chemical Vapor Deposition (CVD) growth process. Type IIa



|                           |                       |                                    |                                    |         |           |           |           |             |   |                |
|---------------------------|-----------------------|------------------------------------|------------------------------------|---------|-----------|-----------|-----------|-------------|---|----------------|
| May 2, 2026               | 1.00 CARAT            | E                                  | VVS 2                              | 62.9%   | 58%       | Pointed   | EXCELLENT | EXCELLENT   | NONE  | LG797620944    |
| IGI Report No LG797620944 | 6.32 - 6.38 X 4.00 MM | Medium To Slightly Thick (Faceted) | Medium To Slightly Thick (Faceted) | Pointed | EXCELLENT | EXCELLENT | NONE      | LG797620944 | Comments: This Laboratory Grown Diamond was created by Chemical Vapor Deposition (CVD) growth process. Type IIa |                |
| ROUND BRILLIANT           | Carat Weight          | Color Grade                        | Clarity Grade                      | Depth   | Table     | Culet     | Polish    | Symmetry    | Fluorescence  | Inscription(s) |