



LABORATORY GROWN DIAMOND REPORT

May 9, 2026
 IGI Report Number **LG797620830**
 Description **LABORATORY GROWN DIAMOND**
 Shape and Cutting Style **OVAL BRILLIANT**
 Measurements **7.23 X 5.17 X 3.18 MM**

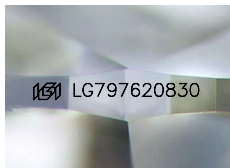
GRADING RESULTS

Carat Weight **0.77 CARAT**
 Color Grade **E**
 Clarity Grade **VVS 2**

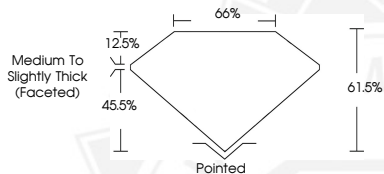
ADDITIONAL GRADING INFORMATION

Polish **VERY GOOD**
 Symmetry **VERY GOOD**
 Fluorescence **NONE**
 Inscription(s) **IGI LG797620830**

Comments: This Laboratory Grown Diamond was created by Chemical Vapor Deposition (CVD) growth process. Type IIa



Sample Image Used



May 9, 2026
 IGI Report Number **LG797620830**
OVAL BRILLIANT
LABORATORY GROWN DIAMOND
7.23 X 5.17 X 3.18 MM
 Carat Weight **0.77 CARAT**
 Color Grade **E**
 Clarity Grade **VVS 2**
 Polish **VERY GOOD**
 Symmetry **VERY GOOD**
 Fluorescence **NONE**
 Inscription(s) **IGI LG797620830**

Comments: This Laboratory Grown Diamond was created by Chemical Vapor Deposition (CVD) growth process. Type IIa



May 9, 2026
 IGI Report Number **LG797620830**
OVAL BRILLIANT
LABORATORY GROWN DIAMOND
7.23 X 5.17 X 3.18 MM
 Carat Weight **0.77 CARAT**
 Color Grade **E**
 Clarity Grade **VVS 2**
 Polish **VERY GOOD**
 Symmetry **VERY GOOD**
 Fluorescence **NONE**
 Inscription(s) **IGI LG797620830**

Comments: This Laboratory Grown Diamond was created by Chemical Vapor Deposition (CVD) growth process. Type IIa



THIS DOCUMENT WAS PRODUCED WITH THE FOLLOWING SECURITY MEASURES: SPECIAL DOCUMENT PAPER, INK SCREENS, WATERMARK, BACKGROUND DESIGNS, HOLOGRAM AND OTHER SECURITY FEATURES NOT LISTED AND DO EXCEED DOCUMENT SECURITY INDUSTRY GUIDELINES.