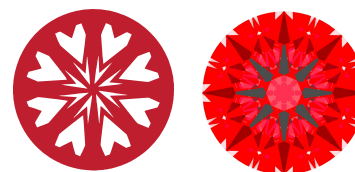




Light Performance Grade: Exceptional



Structured Light Environment Representation



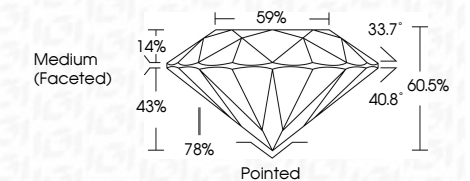
CLARITY table with categories: FL, IF, VS 1-2, VS 1-2, SI 1-2, I 1-3



THE DOCUMENT WAS PRODUCED WITH THE FOLLOWING SECURITY MEASURES: SPECIAL DOCUMENT PAPER, INK SCREENS, WATERMARK, BACKGROUND DESIGNS, HOLOGRAM AND OTHER SECURITY FEATURES NOT LISTED AND DO EXCEED DOCUMENT SECURITY INDUSTRY GUIDELINES.



April 30, 2026 IGI Report Number LG797620234 Description LABORATORY GROWN DIAMOND Shape and Cutting Style ROUND BRILLIANT Measurements 9.33 - 9.35 X 5.65 MM GRADING RESULTS Carat Weight 3.03 CARATS Color Grade E Clarity Grade VVS 2 Cut Grade IDEAL



ADDITIONAL GRADING INFORMATION Polish EXCELLENT Symmetry EXCELLENT Fluorescence NONE Inscription(s) IGI LG797620234 Comments: HEARTS & ARROWS This Laboratory Grown Diamond was created by Chemical Vapor Deposition (CVD) growth process. Type IIa



April 30, 2026 IGI Report No LG797620234 ROUND BRILLIANT 9.33 - 9.35 X 5.65 MM Carat Weight 3.03 CARATS Color Grade E Clarity Grade VVS 2 Cut Grade IDEAL Depth 60.5% Table 59% Grade Medium (Faceted) Polished EXCELLENT Polish EXCELLENT Symmetry EXCELLENT Fluorescence NONE Inscription(s) IGI LG797620234 Comments: HEARTS & ARROWS This Laboratory Grown Diamond was created by Chemical Vapor Deposition (CVD) growth process. Type IIa

ELECTRONIC COPY LABORATORY GROWN DIAMOND REPORT

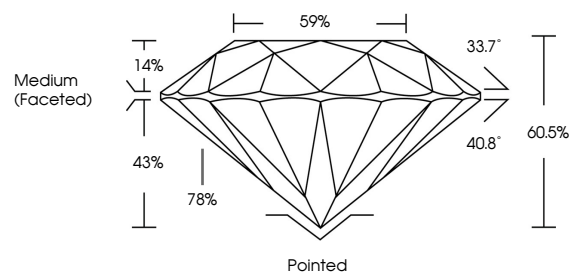
April 30, 2026 IGI Report Number LG797620234 Description LABORATORY GROWN DIAMOND Shape and Cutting Style ROUND BRILLIANT Measurements 9.33 - 9.35 x 5.65 mm

GRADING RESULTS Carat Weight 3.03 CARATS Color Grade E Clarity Grade VVS 2 Cut Grade IDEAL

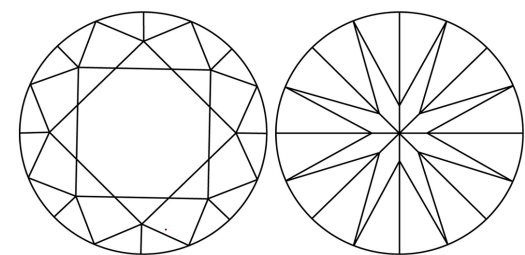
ADDITIONAL GRADING INFORMATION Polish EXCELLENT Symmetry EXCELLENT Fluorescence NONE Inscription(s) IGI LG797620234

Comments: HEARTS & ARROWS This Laboratory Grown Diamond was created by Chemical Vapor Deposition (CVD) growth process. Type IIa

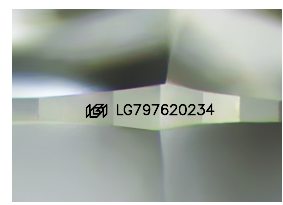
PROPORTIONS



CLARITY CHARACTERISTICS



KEY TO SYMBOLS Red symbols indicate internal characteristics. Green symbols indicate external characteristics.



Sample Image Used