

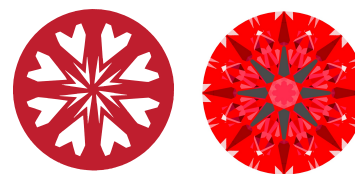


**INTERNATIONAL  
GEMOLOGICAL  
INSTITUTE**

LG797620213  
Report verification at [igi.org](http://igi.org)

**LIGHT PERFORMANCE REPORT**

**Light Performance Grade: Exceptional**



**Structured Light Environment Representation**



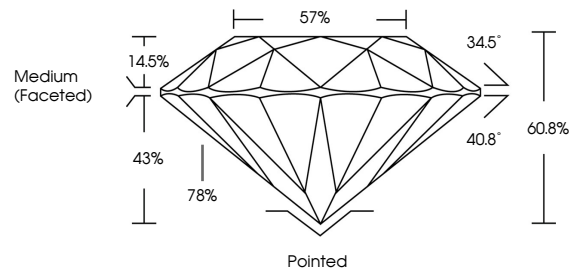
**COLOR**



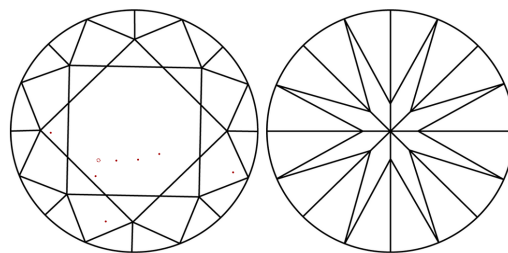
**CLARITY**



**PROPORTIONS**

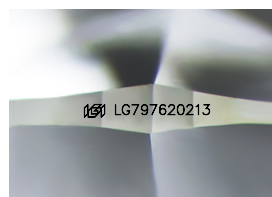


**CLARITY CHARACTERISTICS**



**KEY TO SYMBOLS**

Red symbols indicate internal characteristics.  
Green symbols indicate external characteristics.



Sample Image Used

[www.igi.org](http://www.igi.org)

**ELECTRONIC COPY**

**LABORATORY GROWN DIAMOND REPORT**

April 29, 2026  
IGI Report Number **LG797620213**  
Description **LABORATORY GROWN DIAMOND**  
Shape and Cutting Style **ROUND BRILLIANT**  
Measurements **8.44 - 8.48 x 5.15 mm**

**GRADING RESULTS**

Carat Weight **2.24 CARATS**  
Color Grade **E**  
Clarity Grade **VVS 2**  
Cut Grade **IDEAL**

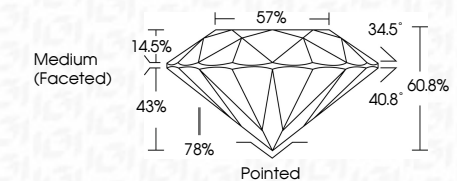
**ADDITIONAL GRADING INFORMATION**

Polish **EXCELLENT**  
Symmetry **EXCELLENT**  
Fluorescence **NONE**  
Inscription(s) **IGI LG797620213**

Comments: HEARTS & ARROWS  
This Laboratory Grown Diamond was created by Chemical Vapor Deposition (CVD) growth process. Type IIa



April 29, 2026  
IGI Report Number **LG797620213**  
Description **LABORATORY GROWN DIAMOND**  
Shape and Cutting Style **ROUND BRILLIANT**  
Measurements **8.44 - 8.48 X 5.15 MM**  
**GRADING RESULTS**  
Carat Weight **2.24 CARATS**  
Color Grade **E**  
Clarity Grade **VVS 2**  
Cut Grade **IDEAL**



**ADDITIONAL GRADING INFORMATION**

Polish **EXCELLENT**  
Symmetry **EXCELLENT**  
Fluorescence **NONE**  
Inscription(s) **IGI LG797620213**  
Comments: HEARTS & ARROWS  
This Laboratory Grown Diamond was created by Chemical Vapor Deposition (CVD) growth process. Type IIa



**IGI**



April 29, 2026	IGI Report No LG797620213	2.24 CARATS	E	Pointed
ROUND BRILLIANT	8.44 - 8.48 X 5.15 MM	IDEAL	VVS 2	EXCELLENT
Color Grade	Cut Grade	60.8%	78%	EXCELLENT
Clarity Grade	Table	57%	Medium (Faceted)	NONE
Depth	Grade			IGI LG797620213
Polish				
Symmetry				
Fluorescence				
Inscription(s)				

Comments: HEARTS & ARROWS  
This Laboratory Grown Diamond was created by Chemical Vapor Deposition (CVD) growth process. Type IIa

