



ELECTRONIC COPY

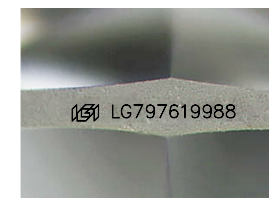
LG797619988
Report verification at igi.org



April 29, 2026
IGI Report Number **LG797619988**
Description **LABORATORY GROWN DIAMOND**
Shape and Cutting Style **MODIFIED LOZENGES STEP CUT**
Measurements **12.69 X 8.48 X 4.86 MM**

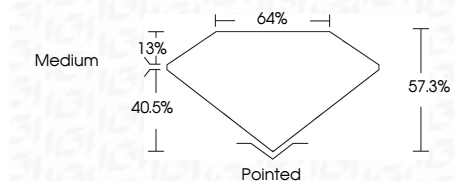
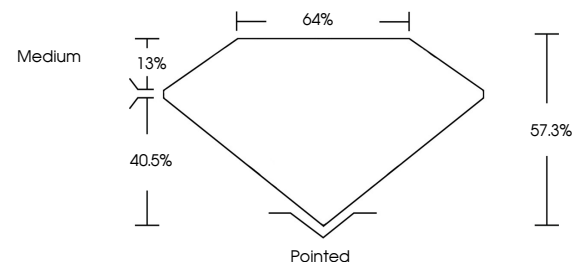
GRADING RESULTS

Carat Weight **3.57 CARATS**
Color Grade **E**
Clarity Grade **VVS 2**

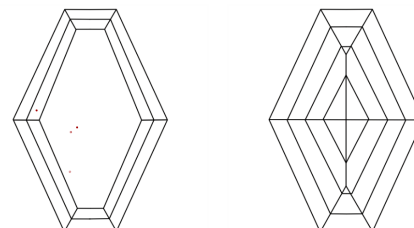


Sample Image Used

PROPORTIONS



CLARITY CHARACTERISTICS



KEY TO SYMBOLS

Red symbols indicate internal characteristics.
Green symbols indicate external characteristics.

COLOR

D E F G H I J Faint Very Light Light

CLARITY

FL	IF	VVS ¹⁻²	VS ¹⁻²	SI ¹⁻²	I ¹⁻³
Flawless	Internally Flawless	Very Very Slightly Included	Very Slightly Included	Slightly Included	Included

ADDITIONAL GRADING INFORMATION

Polish **EXCELLENT**
Symmetry **EXCELLENT**
Fluorescence **NONE**
Inscription(s) **IGI LG797619988**
Comments: This Laboratory Grown Diamond was created by Chemical Vapor Deposition (CVD) growth process. Type IIa



IGI



April 29, 2026
IGI Report No LG797619988
MODIFIED LOZENGES STEP CUT
12.69 X 8.48 X 4.86 MM
3.57 CARATS
E
VVS 2
57.3%
40.5%
64%
Medium
Pointed
EXCELLENT
EXCELLENT
NONE
IGI LG797619988
Comments: This Laboratory Grown Diamond was created by Chemical Vapor Deposition (CVD) growth process. Type IIa