



**ELECTRONIC COPY**

LG797618995  
Report verification at igi.org



May 5, 2026

IGI Report Number **LG797618995**

Description **LABORATORY GROWN DIAMOND**

Shape and Cutting Style **EMERALD CUT**

Measurements **9.31 X 6.44 X 4.40 MM**

**GRADING RESULTS**

Carat Weight **2.59 CARATS**

Color Grade **E**

Clarity Grade **VVS 1**

May 5, 2026  
IGI Report Number **LG797618995**  
Description **LABORATORY GROWN DIAMOND**  
Shape and Cutting Style **EMERALD CUT**  
Measurements **9.31 X 6.44 X 4.40 MM**

**GRADING RESULTS**

Carat Weight **2.59 CARATS**

Color Grade **E**

Clarity Grade **VVS 1**

**ADDITIONAL GRADING INFORMATION**

Polish **EXCELLENT**

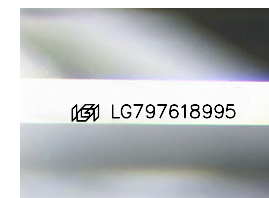
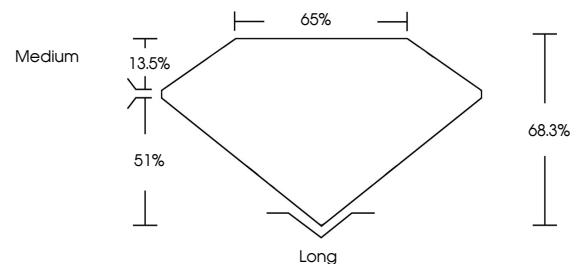
Symmetry **EXCELLENT**

Fluorescence **NONE**

Inscription(s) **IGI LG797618995**

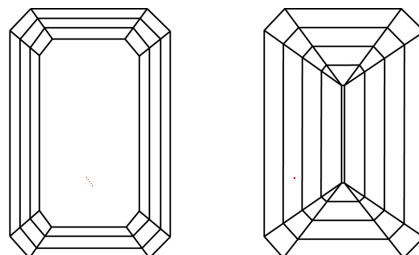
Comments: This Laboratory Grown Diamond was created by Chemical Vapor Deposition (CVD) growth process.  
Type IIa

**PROPORTIONS**



Sample Image Used

**CLARITY CHARACTERISTICS**



**KEY TO SYMBOLS**

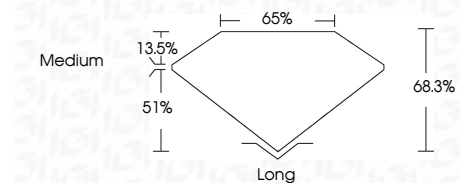
Red symbols indicate internal characteristics.  
Green symbols indicate external characteristics.

**COLOR**

D E F G H I J Faint Very Light Light

**CLARITY**

FL	IF	VVS <sup>1-2</sup>	VS <sup>1-2</sup>	SI <sup>1-2</sup>	I <sup>1-3</sup>
Flawless	Internally Flawless	Very Very Slightly Included	Very Slightly Included	Slightly Included	Included



**ADDITIONAL GRADING INFORMATION**

Polish **EXCELLENT**

Symmetry **EXCELLENT**

Fluorescence **NONE**

Inscription(s) **IGI LG797618995**

Comments: This Laboratory Grown Diamond was created by Chemical Vapor Deposition (CVD) growth process.  
Type IIa



**IGI**



May 5, 2026  
IGI Report No LG797618995  
**EMERALD CUT**  
9.31 X 6.44 X 4.40 MM  
2.59 CARATS  
E  
VVS 1  
68.3%  
51%  
65%  
Medium  
Long  
EXCELLENT  
EXCELLENT  
NONE  
IGI LG797618995  
Comments: This Laboratory Grown Diamond was created by Chemical Vapor Deposition (CVD) growth process.  
Type IIa