



**ELECTRONIC COPY**

LG797616567  
Report verification at igi.org



April 29, 2026

IGI Report Number **LG797616567**

Description **LABORATORY GROWN DIAMOND**

Shape and Cutting Style **SQUARE EMERALD CUT**

Measurements **5.66 X 5.58 X 3.58 MM**

**GRADING RESULTS**

Carat Weight **1.02 CARAT**

Color Grade **D**

Clarity Grade **VVS 2**

April 29, 2026

IGI Report Number **LG797616567**

Description **LABORATORY GROWN DIAMOND**

Shape and Cutting Style **SQUARE EMERALD CUT**

Measurements **5.66 X 5.58 X 3.58 MM**

**GRADING RESULTS**

Carat Weight **1.02 CARAT**

Color Grade **D**

Clarity Grade **VVS 2**

**ADDITIONAL GRADING INFORMATION**

Polish **EXCELLENT**

Symmetry **EXCELLENT**

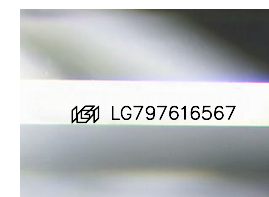
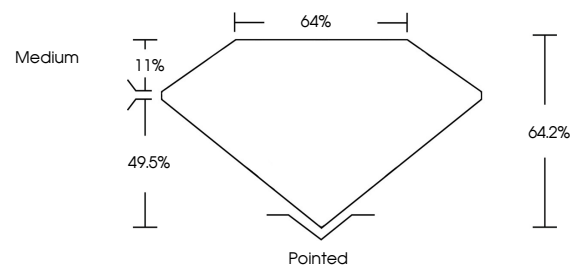
Fluorescence **NONE**

Inscription(s) **IGI LG797616567**

Comments: As Grown - No indication of post-growth treatment.

This Laboratory Grown Diamond was created by High Pressure High Temperature (HPHT) growth process. Type II

**PROPORTIONS**



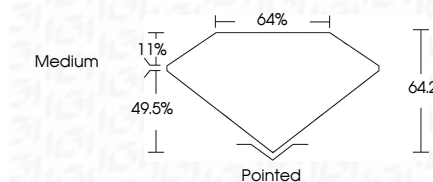
Sample Image Used

**COLOR**

D E F G H I J Faint Very Light Light

**CLARITY**

FL	IF	VVS <sup>1-2</sup>	VS <sup>1-2</sup>	SI <sup>1-2</sup>	I <sup>1-3</sup>
Flawless	Internally Flawless	Very Very Slightly Included	Very Slightly Included	Slightly Included	Included



**ADDITIONAL GRADING INFORMATION**

Polish **EXCELLENT**

Symmetry **EXCELLENT**

Fluorescence **NONE**

Inscription(s) **IGI LG797616567**

Comments: As Grown - No indication of post-growth treatment.

This Laboratory Grown Diamond was created by High Pressure High Temperature (HPHT) growth process. Type II



**IGI**



April 29, 2026	1.02 CARAT	D	Polished
IGI Report No LG797616567	VVS 2	64.2%	EXCELLENT
SQUARE EMERALD CUT	64.2%	64%	EXCELLENT
5.66 X 5.58 X 3.58 MM	Medium	Pointed	NONE
Carat Weight	None	None	IGI LG797616567
Color Grade	None	None	
Clarity Grade	None	None	
Depth	None	None	
Table	None	None	
Girdle	None	None	
Culet	None	None	
Polish	None	None	
Symmetry	None	None	
Fluorescence	None	None	
Inscription(s)	None	None	

Comments: As Grown - No indication of post-growth treatment. This Laboratory Grown Diamond was created by High Pressure High Temperature (HPHT) growth process. Type II