



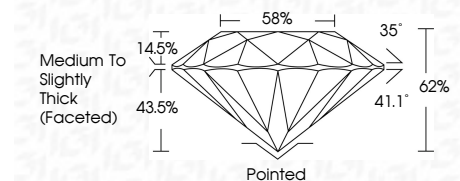
ELECTRONIC COPY

LG797615736 Report verification at igi.org



May 9, 2026 IGI Report Number LG797615736 Description LABORATORY GROWN DIAMOND Shape and Cutting Style ROUND BRILLIANT Measurements 6.56 - 6.58 X 4.07 MM

GRADING RESULTS Carat Weight 1.09 CARAT Color Grade E Clarity Grade VS 2 Cut Grade IDEAL



ADDITIONAL GRADING INFORMATION Polish EXCELLENT Symmetry EXCELLENT Fluorescence NONE Inscription(s) IGI LG797615736

Comments: This Laboratory Grown Diamond was created by Chemical Vapor Deposition (CVD) growth process. Type IIa



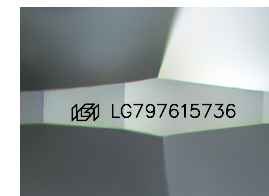
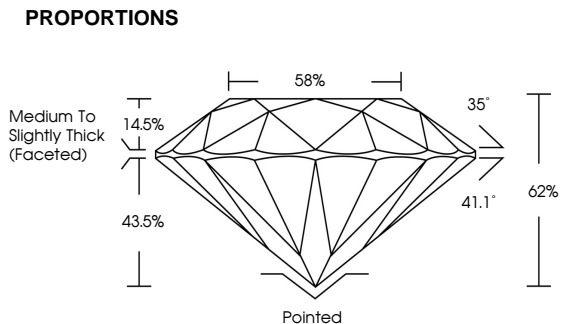
May 9, 2026 IGI Report No LG797615736 ROUND BRILLIANT 6.56 - 6.58 X 4.07 MM 1.09 CARAT E VS 2 IDEAL 62% 88% Medium To Slightly Thick (Faceted) Pointed EXCELLENT EXCELLENT NONE IGI LG797615736

Comments: This Laboratory Grown Diamond was created by Chemical Vapor Deposition (CVD) growth process. Type IIa

May 9, 2026 IGI Report Number LG797615736 Description LABORATORY GROWN DIAMOND Shape and Cutting Style ROUND BRILLIANT Measurements 6.56 - 6.58 X 4.07 MM GRADING RESULTS Carat Weight 1.09 CARAT Color Grade E Clarity Grade VS 2 Cut Grade IDEAL

ADDITIONAL GRADING INFORMATION Polish EXCELLENT Symmetry EXCELLENT Fluorescence NONE Inscription(s) IGI LG797615736

Comments: This Laboratory Grown Diamond was created by Chemical Vapor Deposition (CVD) growth process. Type IIa



Sample Image Used

Table with columns D, E, F, G, H, I, J, Faint, Very Light, Light

Table with columns FL, IF, VS 1-2, VS 1-2, SI 1-2, I 1-3

