



**ELECTRONIC COPY**

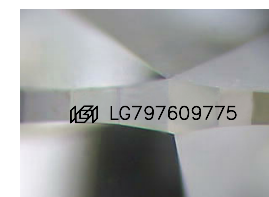
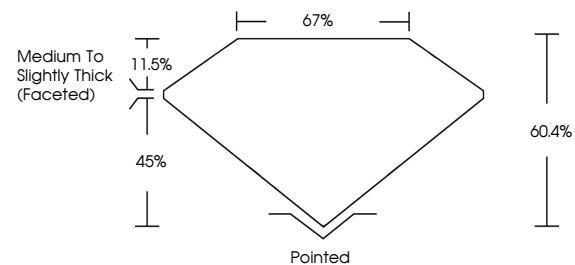
LG797609775  
Report verification at igi.org



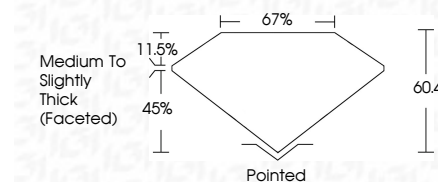
May 2, 2026  
IGI Report Number **LG797609775**  
Description **LABORATORY GROWN DIAMOND**  
Shape and Cutting Style **OVAL BRILLIANT**  
Measurements **8.61 X 5.71 X 3.45 MM**  
**GRADING RESULTS**  
Carat Weight **1.06 CARAT**  
Color Grade **FANCY VIVID BLUE**  
Clarity Grade **VS 1**

May 2, 2026  
IGI Report Number **LG797609775**  
Description **LABORATORY GROWN DIAMOND**  
Shape and Cutting Style **OVAL BRILLIANT**  
Measurements **8.61 X 5.71 X 3.45 MM**  
**GRADING RESULTS**  
Carat Weight **1.06 CARAT**  
Color Grade **FANCY VIVID BLUE**  
Clarity Grade **VS 1**

**PROPORTIONS**



Sample Image Used



**ADDITIONAL GRADING INFORMATION**

Polish **VERY GOOD**  
Symmetry **VERY GOOD**  
Fluorescence **NONE**  
Inscription(s) **IGI LG797609775**

Comments: This Laboratory Grown Diamond was created by Chemical Vapor Deposition (CVD) growth process. Indications of post-growth treatment.

**ADDITIONAL GRADING INFORMATION**

Polish **VERY GOOD**  
Symmetry **VERY GOOD**  
Fluorescence **NONE**  
Inscription(s) **IGI LG797609775**

Comments: This Laboratory Grown Diamond was created by Chemical Vapor Deposition (CVD) growth process. Indications of post-growth treatment.

**COLOR**

D E F G H I J Faint Very Light Light

**CLARITY**

FL	IF	VS <sup>1-2</sup>	VS <sup>1-2</sup>	SI <sup>1-2</sup>	I <sup>1-3</sup>
Flawless	Internally Flawless	Very Very Slightly Included	Very Slightly Included	Slightly Included	Included



**IGI**



May 2, 2026  
IGI Report No **LG797609775**  
**OVAL BRILLIANT**  
8.61 X 5.71 X 3.45 MM  
1.06 CARAT  
Color Grade **FANCY VIVID BLUE**  
Clarity Grade **VS 1**  
Depth **60.4%**  
Table **67%**  
Girdle **Medium to Slightly Thick (Faceted)**  
Culet **Pointed**  
Polish **VERY GOOD**  
Symmetry **VERY GOOD**  
Fluorescence **NONE**  
Inscription(s) **IGI LG797609775**  
Comments: This Laboratory Grown Diamond was created by Chemical Vapor Deposition (CVD) growth process. Indications of post-growth treatment.