



ELECTRONIC COPY

LG797609378
Report verification at igi.org



May 11, 2026

IGI Report Number **LG797609378**

Description **LABORATORY GROWN DIAMOND**

Shape and Cutting Style **FREEFORM FACETED**

Measurements **7.22 X 9.70 X 3.81 MM**

GRADING RESULTS

Carat Weight **1.45 CARAT**

Color Grade **FANCY VIVID BLUE**

Clarity Grade **VS 1**

LABORATORY GROWN DIAMOND REPORT

May 11, 2026

IGI Report Number **LG797609378**

Description **LABORATORY GROWN DIAMOND**

Shape and Cutting Style **FREEFORM FACETED**

Measurements **7.22 X 9.70 X 3.81 MM**

GRADING RESULTS

Carat Weight **1.45 CARAT**

Color Grade **FANCY VIVID BLUE**

Clarity Grade **VS 1**

ADDITIONAL GRADING INFORMATION

Polish **EXCELLENT**

Symmetry **EXCELLENT**

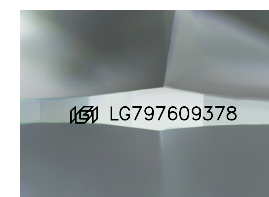
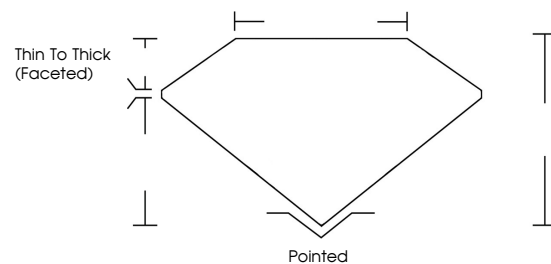
Fluorescence **NONE**

Inscription(s) **IGI LG797609378**

Comments: This Laboratory Grown Diamond was created by Chemical Vapor Deposition (CVD) growth process.

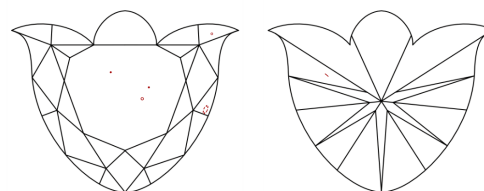
Indications of post-growth treatment.

PROPORTIONS



Sample Image Used

CLARITY CHARACTERISTICS



KEY TO SYMBOLS

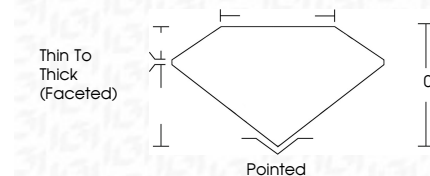
Red symbols indicate internal characteristics.
Green symbols indicate external characteristics.

COLOR

D E F G H I J Faint Very Light Light

CLARITY

FL	IF	VS ¹⁻²	VS ¹⁻²	SI ¹⁻²	I ¹⁻³
Flawless	Internally Flawless	Very Very Slightly Included	Very Slightly Included	Slightly Included	Included



ADDITIONAL GRADING INFORMATION

Polish **EXCELLENT**

Symmetry **EXCELLENT**

Fluorescence **NONE**

Inscription(s) **IGI LG797609378**

Comments: This Laboratory Grown Diamond was created by Chemical Vapor Deposition (CVD) growth process. Indications of post-growth treatment.



May 11, 2026
IGI Report No LG797609378
FREEFORM FACETED

7.22 X 9.70 X 3.81 MM
1.45 CARAT
FANCY VIVID BLUE
VS 1
0%
0%

Thin To Thick (Faceted)
Pointed
EXCELLENT
EXCELLENT
NONE
IGI LG797609378

Comments: This Laboratory Grown Diamond was created by Chemical Vapor Deposition (CVD) growth process. Indications of post-growth treatment.