



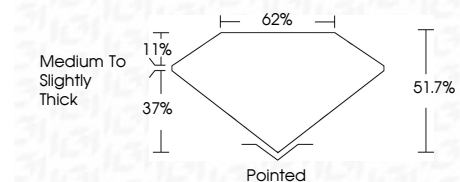
ELECTRONIC COPY

LG797609271
Report verification at igi.org



May 4, 2026
IGI Report Number **LG797609271**
Description **LABORATORY GROWN DIAMOND**
Shape and Cutting Style **LOZENGE STEP CUT**
Measurements **10.24 X 7.91 X 4.09 MM**

GRADING RESULTS
Carat Weight **1.54 CARAT**
Color Grade **E**
Clarity Grade **VVS 2**



ADDITIONAL GRADING INFORMATION
Polish **EXCELLENT**
Symmetry **VERY GOOD**
Fluorescence **NONE**
Inscription(s) **IGI LG797609271**
Comments: This Laboratory Grown Diamond was created by Chemical Vapor Deposition (CVD) growth process. Type IIa



May 4, 2026
IGI Report No LG797609271
LOZENGE STEP CUT
10.24 X 7.91 X 4.09 MM
1.54 CARAT
E
VVS 2
51.7%
62%
Medium to Slightly Thick
Pointed
EXCELLENT
VERY GOOD
NONE
IGI LG797609271
Comments: This Laboratory Grown Diamond was created by Chemical Vapor Deposition (CVD) growth process. Type IIa

LABORATORY GROWN DIAMOND REPORT

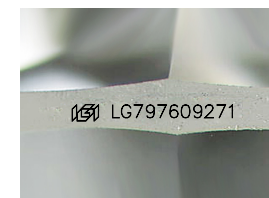
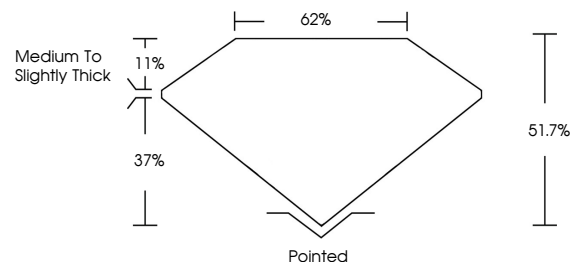
May 4, 2026
IGI Report Number **LG797609271**
Description **LABORATORY GROWN DIAMOND**
Shape and Cutting Style **LOZENGE STEP CUT**
Measurements **10.24 X 7.91 X 4.09 MM**

GRADING RESULTS
Carat Weight **1.54 CARAT**
Color Grade **E**
Clarity Grade **VVS 2**

ADDITIONAL GRADING INFORMATION
Polish **EXCELLENT**
Symmetry **VERY GOOD**
Fluorescence **NONE**
Inscription(s) **IGI LG797609271**

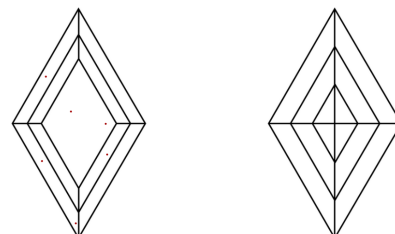
Comments: This Laboratory Grown Diamond was created by Chemical Vapor Deposition (CVD) growth process. Type IIa

PROPORTIONS



Sample Image Used

CLARITY CHARACTERISTICS



KEY TO SYMBOLS

Red symbols indicate internal characteristics.
Green symbols indicate external characteristics.

COLOR

D E F G H I J Faint Very Light Light

CLARITY

| FL | IF | VVS ¹⁻² | VS ¹⁻² | SI ¹⁻² | I ¹⁻³ |
|----------|---------------------|-----------------------------|------------------------|-------------------|------------------|
| Flawless | Internally Flawless | Very Very Slightly Included | Very Slightly Included | Slightly Included | Included |

