



ELECTRONIC COPY

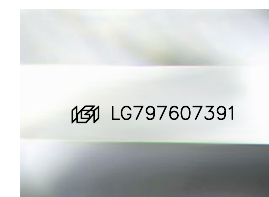
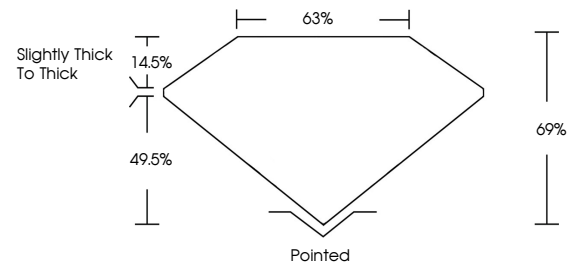
LG797607391
Report verification at igi.org



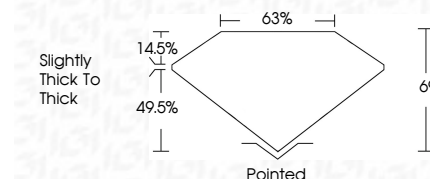
May 2, 2026
IGI Report Number **LG797607391**
Description **LABORATORY GROWN DIAMOND**
Shape and Cutting Style **CUT CORNERED
RECTANGULAR MODIFIED
BRILLIANT**
Measurements **12.64 X 8.19 X 5.65 MM**
GRADING RESULTS
Carat Weight **5.09 CARATS**
Color Grade **FANCY VIVID PINK**
Clarity Grade **VVS 2**

May 2, 2026
IGI Report Number **LG797607391**
Description **LABORATORY GROWN DIAMOND**
Shape and Cutting Style **CUT CORNERED RECTANGULAR
MODIFIED BRILLIANT**
Measurements **12.64 X 8.19 X 5.65 MM**
GRADING RESULTS
Carat Weight **5.09 CARATS**
Color Grade **FANCY VIVID PINK**
Clarity Grade **VVS 2**

PROPORTIONS



Sample Image Used



ADDITIONAL GRADING INFORMATION

Polish **EXCELLENT**
Symmetry **EXCELLENT**
Fluorescence **STRONG**
Inscription(s) **IGI LG797607391**

Comments: This Laboratory Grown Diamond was created by Chemical Vapor Deposition (CVD) growth process. Indications of post-growth treatment.

ADDITIONAL GRADING INFORMATION

Polish **EXCELLENT**
Symmetry **EXCELLENT**
Fluorescence **STRONG**
Inscription(s) **IGI LG797607391**

Comments: This Laboratory Grown Diamond was created by Chemical Vapor Deposition (CVD) growth process. Indications of post-growth treatment.

COLOR

D E F G H I J Faint Very Light Light

CLARITY

FL	IF	VVS ¹⁻²	VS ¹⁻²	SI ¹⁻²	I ¹⁻³
Flawless	Internally Flawless	Very Very Slightly Included	Very Slightly Included	Slightly Included	Included



IGI

May 2, 2026
IGI Report No **LG797607391**
CUT CORNERED RECT. MODIFIED BRILLIANT
12.64 X 8.19 X 5.65 MM
Carat Weight **5.09 CARATS**
Color Grade **FANCY VIVID PINK**
Clarity Grade **VVS 2**
Depth **69%**
Table **14.5%**
Girdle **Slightly thick to Thick**
Culet **Pointed**
Polish **EXCELLENT**
Symmetry **EXCELLENT**
Fluorescence **STRONG**
Inscription(s) **IGI LG797607391**

Comments: This Laboratory Grown Diamond was created by Chemical Vapor Deposition (CVD) growth process. Indications of post-growth treatment.