



ELECTRONIC COPY

LG797606695
Report verification at igi.org



May 1, 2026
IGI Report Number LG797606695
Description LABORATORY GROWN DIAMOND
Shape and Cutting Style CUT CORNERED RECTANGULAR MODIFIED BRILLIANT
Measurements 14.16 X 9.24 X 6.20 MM
GRADING RESULTS
Carat Weight 7.02 CARATS
Color Grade FANCY INTENSE PINK
Clarity Grade VS 1

LABORATORY GROWN DIAMOND REPORT

May 1, 2026
IGI Report Number LG797606695
Description LABORATORY GROWN DIAMOND
Shape and Cutting Style CUT CORNERED RECTANGULAR MODIFIED BRILLIANT
Measurements 14.16 X 9.24 X 6.20 MM

GRADING RESULTS

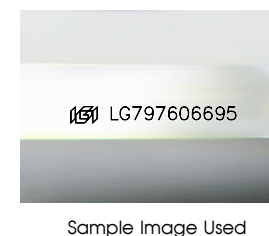
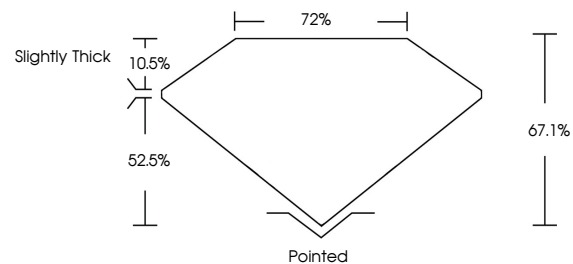
Carat Weight 7.02 CARATS
Color Grade FANCY INTENSE PINK
Clarity Grade VS 1

ADDITIONAL GRADING INFORMATION

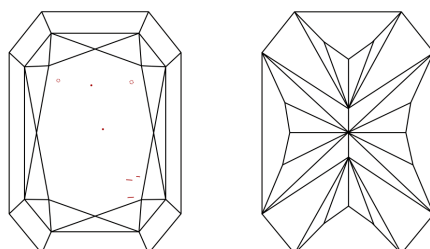
Polish EXCELLENT
Symmetry EXCELLENT
Fluorescence SLIGHT
Inscription(s) LG797606695

Comments: This Laboratory Grown Diamond was created by Chemical Vapor Deposition (CVD) growth process.
Indications of post-growth treatment.

PROPORTIONS



CLARITY CHARACTERISTICS



KEY TO SYMBOLS

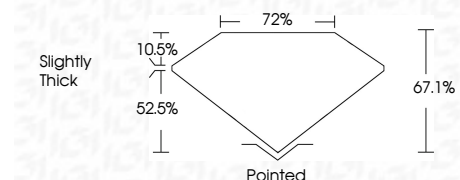
Red symbols indicate internal characteristics.
Green symbols indicate external characteristics.

COLOR

D E F G H I J Faint Very Light Light

CLARITY

FL IF VS 1-2 VS 2-3 SI 1-2 I 1-3
Flawless Internally Flawless Very Very Slightly Included Very Slightly Included Slightly Included Included



ADDITIONAL GRADING INFORMATION

Polish EXCELLENT
Symmetry EXCELLENT
Fluorescence SLIGHT
Inscription(s) LG797606695
Comments: This Laboratory Grown Diamond was created by Chemical Vapor Deposition (CVD) growth process.
Indications of post-growth treatment.



May 1, 2026
IGI Report No LG797606695
CUT CORNERED RECT. MODIFIED BRILLIANT
14.16 X 9.24 X 6.20 MM
7.02 CARATS
FANCY INTENSE PINK
VS 1
67.1%
72%
Slightly Thick
Pointed
EXCELLENT
EXCELLENT
SLIGHT
LG797606695
Comments: This Laboratory Grown Diamond was created by Chemical Vapor Deposition (CVD) growth process.
Indications of post-growth treatment.