



**ELECTRONIC COPY**

LG797606534  
Report verification at igi.org



May 2, 2026  
IGI Report Number **LG797606534**

Description **LABORATORY GROWN DIAMOND**

Shape and Cutting Style **PEAR MODIFIED BRILLIANT**

Measurements **10.02 X 6.59 X 4.22 MM**

**GRADING RESULTS**

Carat Weight **2.06 CARATS**

Color Grade **FANCY VIVID YELLOW**

Clarity Grade **VS 2**

May 2, 2026

IGI Report Number **LG797606534**

Description **LABORATORY GROWN DIAMOND**

Shape and Cutting Style **PEAR MODIFIED BRILLIANT**

Measurements **10.02 X 6.59 X 4.22 MM**

**GRADING RESULTS**

Carat Weight **2.06 CARATS**

Color Grade **FANCY VIVID YELLOW**

Clarity Grade **VS 2**

**ADDITIONAL GRADING INFORMATION**

Polish **EXCELLENT**

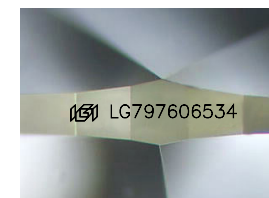
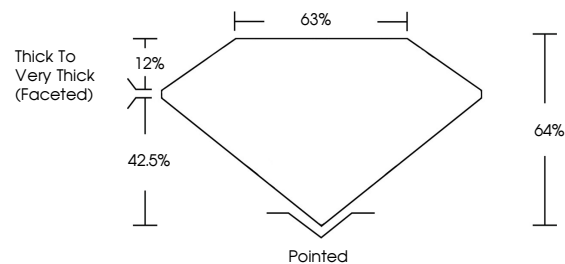
Symmetry **EXCELLENT**

Fluorescence **NONE**

Inscription(s) **IGI LG797606534**

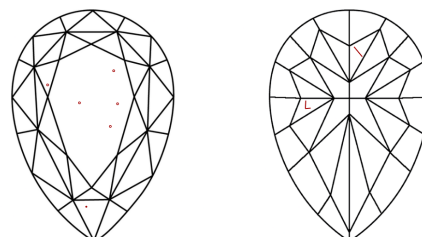
Comments: This Laboratory Grown Diamond was created by Chemical Vapor Deposition (CVD) growth process.

**PROPORTIONS**



Sample Image Used

**CLARITY CHARACTERISTICS**



**KEY TO SYMBOLS**

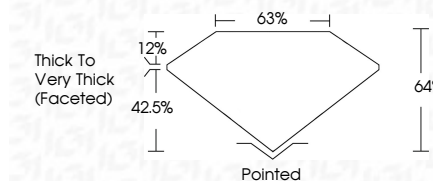
Red symbols indicate internal characteristics.  
Green symbols indicate external characteristics.

**COLOR**

D E F G H I J Faint Very Light Light

**CLARITY**

FL	IF	VS <sup>1-2</sup>	VS <sup>1-2</sup>	SI <sup>1-2</sup>	I <sup>1-3</sup>
Flawless	Internally Flawless	Very Very Slightly Included	Very Slightly Included	Slightly Included	Included



**ADDITIONAL GRADING INFORMATION**

Polish **EXCELLENT**

Symmetry **EXCELLENT**

Fluorescence **NONE**

Inscription(s) **IGI LG797606534**

Comments: This Laboratory Grown Diamond was created by Chemical Vapor Deposition (CVD) growth process.



**IGI**



May 2, 2026  
IGI Report No LG797606534  
**PEAR MODIFIED BRILLIANT**

**2.06 CARATS**  
Carat Weight  
**FANCY VIVID YELLOW**  
Color Grade

**VS 2**  
Clarity Grade  
**64%**  
Depth  
**63%**  
Girdle  
**Thick to Very Thick (Faceted)**

**Pointed**  
Culet  
**EXCELLENT**  
Polish  
**EXCELLENT**  
Symmetry  
**NONE**  
Fluorescence  
Inscription(s) **IGI LG797606534**

Comments: This Laboratory Grown Diamond was created by Chemical Vapor Deposition (CVD) growth process.