



**ELECTRONIC COPY**

LG797604015  
Report verification at igi.org



May 4, 2026

IGI Report Number **LG797604015**

Description **LABORATORY GROWN DIAMOND**

Shape and Cutting Style **PRINCESS CUT**

Measurements **9.74 X 9.49 X 6.87 MM**

**GRADING RESULTS**

Carat Weight **5.47 CARATS**

Color Grade **F**

Clarity Grade **VS 1**

May 4, 2026  
IGI Report Number **LG797604015**  
Description **LABORATORY GROWN DIAMOND**  
Shape and Cutting Style **PRINCESS CUT**  
Measurements **9.74 X 9.49 X 6.87 MM**

**GRADING RESULTS**

Carat Weight **5.47 CARATS**

Color Grade **F**

Clarity Grade **VS 1**

**ADDITIONAL GRADING INFORMATION**

Polish **EXCELLENT**

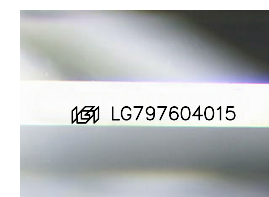
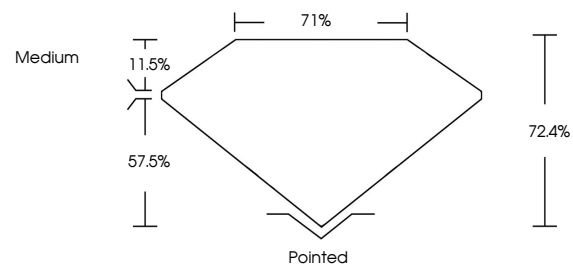
Symmetry **EXCELLENT**

Fluorescence **NONE**

Inscription(s) **IGI LG797604015**

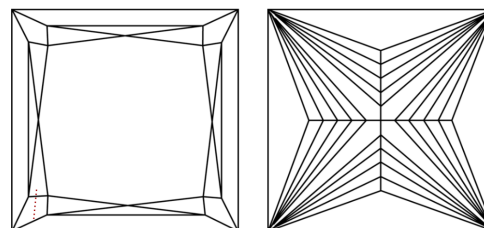
Comments: This Laboratory Grown Diamond was created by Chemical Vapor Deposition (CVD) growth process.  
Type IIa

**PROPORTIONS**



Sample Image Used

**CLARITY CHARACTERISTICS**



**KEY TO SYMBOLS**

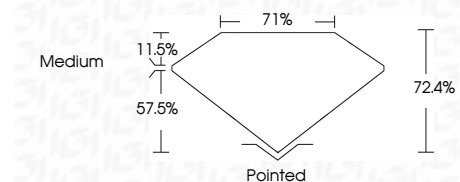
Red symbols indicate internal characteristics.  
Green symbols indicate external characteristics.

**COLOR**

D E F G H I J Faint Very Light Light

**CLARITY**

FL	IF	VS <sup>1-2</sup>	VS <sup>1-2</sup>	SI <sup>1-2</sup>	I <sup>1-3</sup>
Flawless	Internally Flawless	Very Very Slightly Included	Very Slightly Included	Slightly Included	Included



**ADDITIONAL GRADING INFORMATION**

Polish **EXCELLENT**

Symmetry **EXCELLENT**

Fluorescence **NONE**

Inscription(s) **IGI LG797604015**

Comments: This Laboratory Grown Diamond was created by Chemical Vapor Deposition (CVD) growth process.  
Type IIa



**IGI**



May 4, 2026  
IGI Report No **LG797604015**  
**PRINCESS CUT**

**5.47 CARATS**  
F

**9.74 X 9.49 X 6.87 MM**  
Color Grade **F**  
Clarity Grade **VS 1**  
Depth **57.4%**  
Table **11.5%**  
Girdle **Medium**

**Pointed**  
Culet **EXCELLENT**  
Polish **EXCELLENT**  
Symmetry **EXCELLENT**  
Fluorescence **NONE**  
Inscription(s) **IGI LG797604015**

Comments: This Laboratory Grown Diamond was created by Chemical Vapor Deposition (CVD) growth process.  
Type IIa