



ELECTRONIC COPY

LG797601995
Report verification at igi.org



May 2, 2026

IGI Report Number **LG797601995**

Description **LABORATORY GROWN DIAMOND**

Shape and Cutting Style **ROUND BRILLIANT**

Measurements **6.42 - 6.46 X 4.07 MM**

GRADING RESULTS

Carat Weight **1.03 CARAT**

Color Grade **E**

Clarity Grade **VS 2**

Cut Grade **EXCELLENT**

May 2, 2026

IGI Report Number **LG797601995**

Description **LABORATORY GROWN DIAMOND**

Shape and Cutting Style **ROUND BRILLIANT**

Measurements **6.42 - 6.46 X 4.07 MM**

GRADING RESULTS

Carat Weight **1.03 CARAT**

Color Grade **E**

Clarity Grade **VS 2**

Cut Grade **EXCELLENT**

ADDITIONAL GRADING INFORMATION

Polish **EXCELLENT**

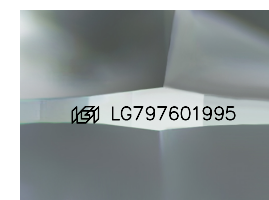
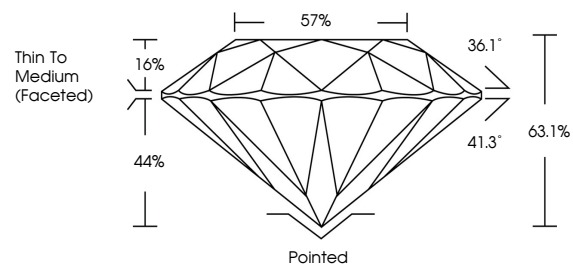
Symmetry **EXCELLENT**

Fluorescence **NONE**

Inscription(s) **IGI LG797601995**

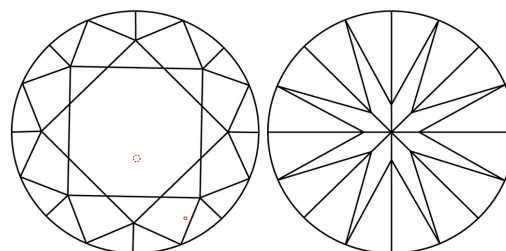
Comments: This Laboratory Grown Diamond was created by Chemical Vapor Deposition (CVD) growth process.
Type IIa

PROPORTIONS



Sample Image Used

CLARITY CHARACTERISTICS



KEY TO SYMBOLS

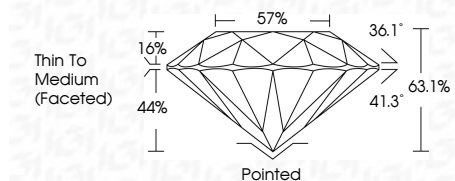
Red symbols indicate internal characteristics.
Green symbols indicate external characteristics.

COLOR

D E F G H I J Faint Very Light Light

CLARITY

| FL | IF | VS ¹⁻² | VS ¹⁻² | SI ¹⁻² | I ¹⁻³ |
|----------|---------------------|-----------------------------|------------------------|-------------------|------------------|
| Flawless | Internally Flawless | Very Very Slightly Included | Very Slightly Included | Slightly Included | Included |



ADDITIONAL GRADING INFORMATION

Polish **EXCELLENT**

Symmetry **EXCELLENT**

Fluorescence **NONE**

Inscription(s) **IGI LG797601995**

Comments: This Laboratory Grown Diamond was created by Chemical Vapor Deposition (CVD) growth process.
Type IIa



| | | | | | | | | | | |
|---------------------------|-----------------------|-------------|---------------|-------|-------|--------------------------|-----------|-----------|--------------|-----------------|
| May 2, 2026 | 1.03 CARAT | E | VS 2 | 63.1% | 57% | Pointed | EXCELLENT | EXCELLENT | NONE | IGI LG797601995 |
| IGI Report No LG797601995 | Carat Weight | Color Grade | Clarity Grade | Depth | Table | Thin To Medium (Faceted) | Polish | Symmetry | Fluorescence | Inscription(s) |
| ROUND BRILLIANT | 6.42 - 6.46 X 4.07 MM | EXCELLENT | EXCELLENT | 63.1% | 57% | Pointed | EXCELLENT | EXCELLENT | NONE | IGI LG797601995 |

Comments: This Laboratory Grown Diamond was created by Chemical Vapor Deposition (CVD) growth process.
Type IIa