



ELECTRONIC COPY

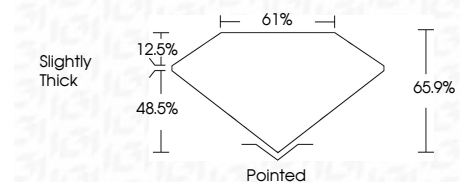
LG795698330
Report verification at igi.org



May 11, 2026
IGI Report Number **LG795698330**
Description **LABORATORY GROWN DIAMOND**
Shape and Cutting Style **OCTAGONAL MIXED CUT**
Measurements **6.06 X 5.90 X 3.89 MM**

GRADING RESULTS

Carat Weight **1.11 CARAT**
Color Grade **E**
Clarity Grade **VVS 2**



ADDITIONAL GRADING INFORMATION

Polish **EXCELLENT**
Symmetry **EXCELLENT**
Fluorescence **NONE**
Inscription(s) **IGI LG795698330**
Comments: This Laboratory Grown Diamond was created by Chemical Vapor Deposition (CVD) growth process. Type IIa



May 11, 2026
IGI Report No LG795698330
OCTAGONAL MIXED CUT
6.06 X 5.90 X 3.89 MM
Carat Weight 1.11 CARAT
Color Grade E
Clarity Grade VVS 2
Depth 65.9%
Table 61%
Girdle Slightly Thick
Culet Pointed
Polish EXCELLENT
Symmetry EXCELLENT
Fluorescence NONE
Inscription(s) IGI LG795698330
Comments: This Laboratory Grown Diamond was created by Chemical Vapor Deposition (CVD) growth process. Type IIa

LABORATORY GROWN DIAMOND REPORT

May 11, 2026
IGI Report Number **LG795698330**
Description **LABORATORY GROWN DIAMOND**
Shape and Cutting Style **OCTAGONAL MIXED CUT**
Measurements **6.06 X 5.90 X 3.89 MM**

GRADING RESULTS

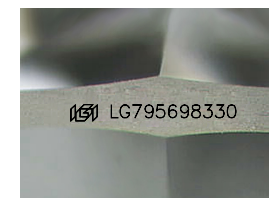
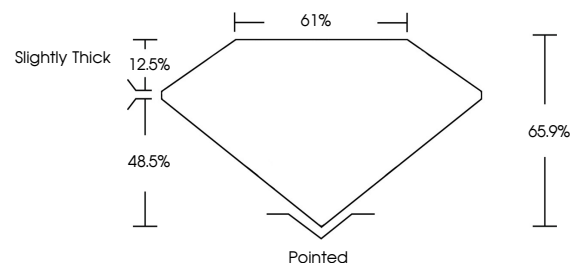
Carat Weight **1.11 CARAT**
Color Grade **E**
Clarity Grade **VVS 2**

ADDITIONAL GRADING INFORMATION

Polish **EXCELLENT**
Symmetry **EXCELLENT**
Fluorescence **NONE**
Inscription(s) **IGI LG795698330**

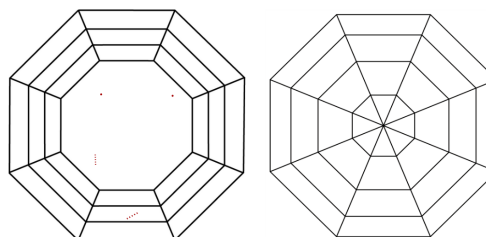
Comments: This Laboratory Grown Diamond was created by Chemical Vapor Deposition (CVD) growth process. Type IIa

PROPORTIONS



Sample Image Used

CLARITY CHARACTERISTICS



KEY TO SYMBOLS

Red symbols indicate internal characteristics.
Green symbols indicate external characteristics.

COLOR

D E F G H I J Faint Very Light Light

CLARITY

FL	IF	VVS ¹⁻²	VS ¹⁻²	SI ¹⁻²	I ¹⁻³
Flawless	Internally Flawless	Very Very Slightly Included	Very Slightly Included	Slightly Included	Included

