



**ELECTRONIC COPY**

LG795698112  
Report verification at igi.org



May 11, 2026  
IGI Report Number **LG795698112**  
Description **LABORATORY GROWN DIAMOND**  
Shape and Cutting Style **CUSHION MODIFIED BRILLIANT**  
Measurements **11.15 X 7.58 X 5.19 MM**  
**GRADING RESULTS**  
Carat Weight **3.75 CARATS**  
Color Grade **E**  
Clarity Grade **VVS 2**

May 11, 2026  
IGI Report Number **LG795698112**  
Description **LABORATORY GROWN DIAMOND**  
Shape and Cutting Style **CUSHION MODIFIED BRILLIANT**  
Measurements **11.15 X 7.58 X 5.19 MM**

**GRADING RESULTS**

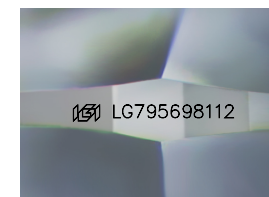
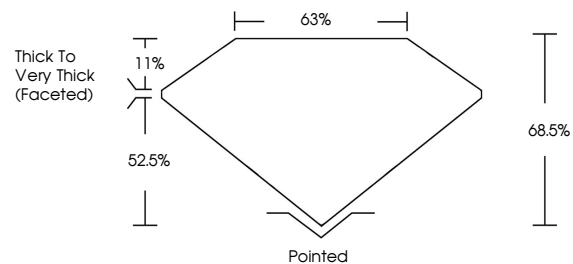
Carat Weight **3.75 CARATS**  
Color Grade **E**  
Clarity Grade **VVS 2**

**ADDITIONAL GRADING INFORMATION**

Polish **EXCELLENT**  
Symmetry **EXCELLENT**  
Fluorescence **NONE**  
Inscription(s) **IGI LG795698112**

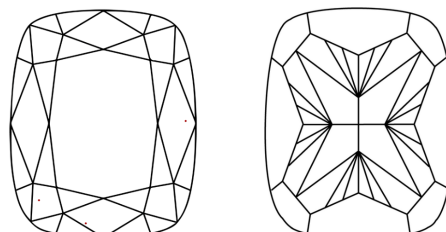
Comments: This Laboratory Grown Diamond was created by Chemical Vapor Deposition (CVD) growth process.  
Type IIa

**PROPORTIONS**



Sample Image Used

**CLARITY CHARACTERISTICS**



**KEY TO SYMBOLS**

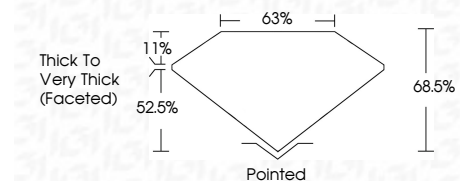
Red symbols indicate internal characteristics.  
Green symbols indicate external characteristics.

**COLOR**

D E F G H I J Faint Very Light Light

**CLARITY**

FL	IF	VVS <sup>1-2</sup>	VS <sup>1-2</sup>	SI <sup>1-2</sup>	I <sup>1-3</sup>
Flawless	Internally Flawless	Very Very Slightly Included	Very Slightly Included	Slightly Included	Included



**ADDITIONAL GRADING INFORMATION**

Polish **EXCELLENT**  
Symmetry **EXCELLENT**  
Fluorescence **NONE**  
Inscription(s) **IGI LG795698112**  
Comments: This Laboratory Grown Diamond was created by Chemical Vapor Deposition (CVD) growth process.  
Type IIa



May 11, 2026  
IGI Report No LG795698112  
CUSHION MODIFIED BRILLIANT  
11.15 X 7.58 X 5.19 MM  
3.75 CARATS  
E  
VVS 2  
68.5%  
52.5%  
11%  
63%  
Pointed  
EXCELLENT  
EXCELLENT  
NONE  
IGI LG795698112

Comments: This Laboratory Grown Diamond was created by Chemical Vapor Deposition (CVD) growth process.  
Type IIa