



April 30, 2026

IGI Report Number **LG795693532**

**ROUND BRILLIANT**

**LABORATORY GROWN DIAMOND**

**6.39 - 6.45 X 3.90 MM**

Carat Weight **0.97 CARAT**

Color Grade **E**

Clarity Grade **VVS 2**

Cut Grade **IDEAL**

Polish **EXCELLENT**

Symmetry **EXCELLENT**

Fluorescence **NONE**

Inscription(s) **IGI LG795693532**

Comments: This Laboratory Grown Diamond was created by Chemical Vapor Deposition (CVD) growth process. Type IIa

**LABORATORY GROWN DIAMOND REPORT**

April 30, 2026

IGI Report Number

**LG795693532**

Description

**LABORATORY GROWN DIAMOND**

Shape and Cutting Style

**ROUND BRILLIANT**

Measurements

**6.39 - 6.45 X 3.90 MM**

**GRADING RESULTS**

Carat Weight

**0.97 CARAT**

Color Grade

**E**

Clarity Grade

**VVS 2**

Cut Grade

**IDEAL**

**ADDITIONAL GRADING INFORMATION**

Polish

**EXCELLENT**

Symmetry

**EXCELLENT**

Fluorescence

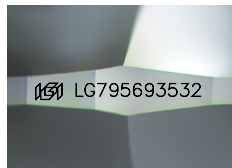
**NONE**

Inscription(s)

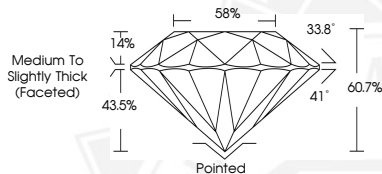
**IGI LG795693532**

Comments: This Laboratory Grown Diamond was created by Chemical Vapor Deposition (CVD) growth process.

Type IIa



Sample Image Used



April 30, 2026

IGI Report Number **LG795693532**

**ROUND BRILLIANT**

**LABORATORY GROWN DIAMOND**

**6.39 - 6.45 X 3.90 MM**

Carat Weight **0.97 CARAT**

Color Grade **E**

Clarity Grade **VVS 2**

Cut Grade **IDEAL**

Polish **EXCELLENT**

Symmetry **EXCELLENT**

Fluorescence **NONE**

Inscription(s) **IGI LG795693532**

Comments: This Laboratory Grown Diamond was created by Chemical Vapor Deposition (CVD) growth process. Type IIa



THIS DOCUMENT WAS PRODUCED WITH THE FOLLOWING SECURITY MEASURES: SPECIAL DOCUMENT PAPER, INK SCREENS, WATERMARK, BACKGROUND DESIGNS, HOLOGRAM AND OTHER SECURITY FEATURES NOT LISTED AND DO EXCEED DOCUMENT SECURITY INDUSTRY GUIDELINES.