



May 2, 2026

IGI Report Number **LG795693497**

**PEAR BRILLIANT**

**LABORATORY GROWN DIAMOND**

**8.46 X 5.49 X 3.44 MM**

Carat Weight **0.97 CARAT**

Color Grade **G**

Clarity Grade **VVS 2**

Polish **EXCELLENT**

Symmetry **EXCELLENT**

Fluorescence **NONE**

Inscription(s) **IGI LG795693497**

Comments: This Laboratory Grown Diamond was created by Chemical Vapor Deposition (CVD) growth process. Type IIa

**LABORATORY GROWN DIAMOND REPORT**

May 2, 2026

IGI Report Number

**LG795693497**

Description

**LABORATORY GROWN DIAMOND**

Shape and Cutting Style

**PEAR BRILLIANT**

Measurements

**8.46 X 5.49 X 3.44 MM**

**GRADING RESULTS**

Carat Weight

**0.97 CARAT**

Color Grade

**G**

Clarity Grade

**VVS 2**

**ADDITIONAL GRADING INFORMATION**

Polish

**EXCELLENT**

Symmetry

**EXCELLENT**

Fluorescence

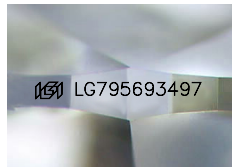
**NONE**

Inscription(s)

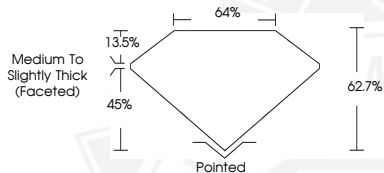
**IGI LG795693497**

Comments: This Laboratory Grown Diamond was created by Chemical Vapor Deposition (CVD) growth process.

Type IIa



Sample Image Used



May 2, 2026

IGI Report Number **LG795693497**

**PEAR BRILLIANT**

**LABORATORY GROWN DIAMOND**

**8.46 X 5.49 X 3.44 MM**

Carat Weight **0.97 CARAT**

Color Grade **G**

Clarity Grade **VVS 2**

Polish **EXCELLENT**

Symmetry **EXCELLENT**

Fluorescence **NONE**

Inscription(s) **IGI LG795693497**

Comments: This Laboratory Grown Diamond was created by Chemical Vapor Deposition (CVD) growth process. Type IIa



THIS DOCUMENT WAS PRODUCED WITH THE FOLLOWING SECURITY MEASURES: SPECIAL DOCUMENT PAPER, INK SCREENS, WATERMARK, BACKGROUND DESIGNS, HOLOGRAM AND OTHER SECURITY FEATURES NOT LISTED AND DO EXCEED DOCUMENT SECURITY INDUSTRY GUIDELINES.