



ELECTRONIC COPY

LG795692023
Report verification at igi.org



April 28, 2026

IGI Report Number **LG795692023**

Description **LABORATORY GROWN DIAMOND**

Shape and Cutting Style **ROUND BRILLIANT**

Measurements **7.12 - 7.16 X 4.45 MM**

GRADING RESULTS

Carat Weight **1.37 CARAT**

Color Grade **E**

Clarity Grade **VS 1**

Cut Grade **IDEAL**

April 28, 2026

IGI Report Number **LG795692023**

Description **LABORATORY GROWN DIAMOND**

Shape and Cutting Style **ROUND BRILLIANT**

Measurements **7.12 - 7.16 X 4.45 MM**

GRADING RESULTS

Carat Weight **1.37 CARAT**

Color Grade **E**

Clarity Grade **VS 1**

Cut Grade **IDEAL**

ADDITIONAL GRADING INFORMATION

Polish **EXCELLENT**

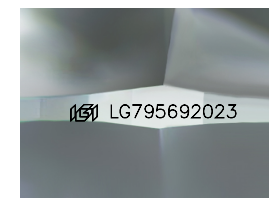
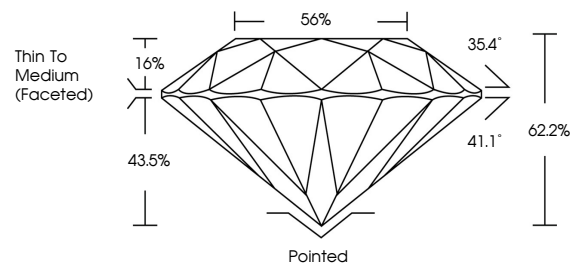
Symmetry **EXCELLENT**

Fluorescence **NONE**

Inscription(s) **IGI LG795692023**

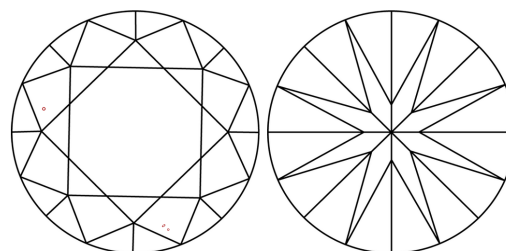
Comments: This Laboratory Grown Diamond was created by Chemical Vapor Deposition (CVD) growth process.
Type IIa

PROPORTIONS



Sample Image Used

CLARITY CHARACTERISTICS



KEY TO SYMBOLS

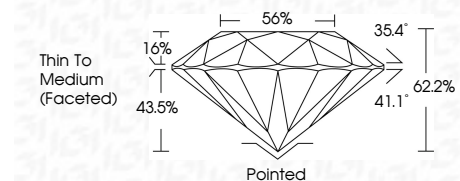
Red symbols indicate internal characteristics.
Green symbols indicate external characteristics.

COLOR

D E F G H I J Faint Very Light Light

CLARITY

FL	IF	VS ¹⁻²	VS ¹⁻²	SI ¹⁻²	I ¹⁻³
Flawless	Internally Flawless	Very Very Slightly Included	Very Slightly Included	Slightly Included	Included



ADDITIONAL GRADING INFORMATION

Polish **EXCELLENT**

Symmetry **EXCELLENT**

Fluorescence **NONE**

Inscription(s) **IGI LG795692023**

Comments: This Laboratory Grown Diamond was created by Chemical Vapor Deposition (CVD) growth process.
Type IIa



IGI



April 28, 2026	IGI Report No LG795692023	1.37 CARAT	E	VS 1	IDEAL	62.2%	56%	Thin To Medium (Faceted)	Pointed	EXCELLENT	EXCELLENT	NONE	IGI LG795692023
ROUND BRILLIANT	7.12 - 7.16 X 4.45 MM	Color Grade	Cut Grade	Depth	Table	Girdle	Culet	Polish	Symmetry	Fluorescence	Inscription(s)	Comments: This Laboratory Grown Diamond was created by Chemical Vapor Deposition (CVD) growth process. Type IIa	