



ELECTRONIC COPY

LG795689710
Report verification at igi.org



May 6, 2026

IGI Report Number **LG795689710**

Description **LABORATORY GROWN DIAMOND**

Shape and Cutting Style **EMERALD CUT**

Measurements **10.14 X 7.16 X 4.93 MM**

GRADING RESULTS

Carat Weight **3.57 CARATS**

Color Grade **FANCY INTENSE BLUE**

Clarity Grade **VVS 2**

May 6, 2026
IGI Report Number **LG795689710**
Description **LABORATORY GROWN DIAMOND**
Shape and Cutting Style **EMERALD CUT**
Measurements **10.14 X 7.16 X 4.93 MM**

GRADING RESULTS

Carat Weight **3.57 CARATS**

Color Grade **FANCY INTENSE BLUE**

Clarity Grade **VVS 2**

ADDITIONAL GRADING INFORMATION

Polish **EXCELLENT**

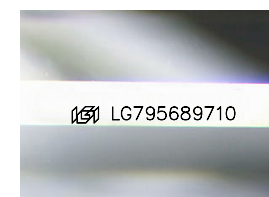
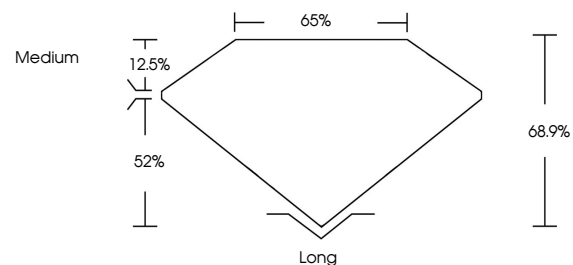
Symmetry **EXCELLENT**

Fluorescence **NONE**

Inscription(s) **IGI LG795689710**

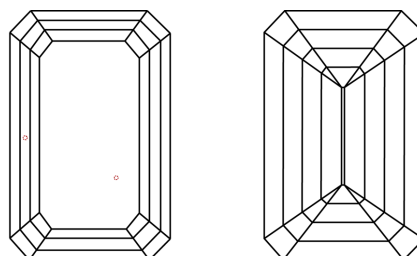
Comments: This Laboratory Grown Diamond was created by Chemical Vapor Deposition (CVD) growth process.
Indications of post-growth treatment.

PROPORTIONS



Sample Image Used

CLARITY CHARACTERISTICS



KEY TO SYMBOLS

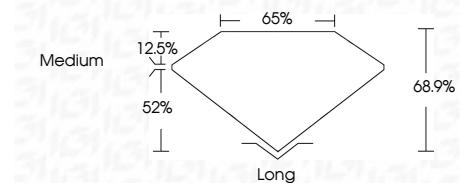
Red symbols indicate internal characteristics.
Green symbols indicate external characteristics.

COLOR

D E F G H I J Faint Very Light Light

CLARITY

FL	IF	VVS ¹⁻²	VS ¹⁻²	SI ¹⁻²	I ¹⁻³
Flawless	Internally Flawless	Very Very Slightly Included	Very Slightly Included	Slightly Included	Included



ADDITIONAL GRADING INFORMATION

Polish **EXCELLENT**

Symmetry **EXCELLENT**

Fluorescence **NONE**

Inscription(s) **IGI LG795689710**

Comments: This Laboratory Grown Diamond was created by Chemical Vapor Deposition (CVD) growth process.
Indications of post-growth treatment.



May 6, 2026
IGI Report No **LG795689710**
EMERALD CUT
10.14 X 7.16 X 4.93 MM
Carat Weight **3.57 CARATS**
Color Grade **FANCY INTENSE BLUE**
Clarity Grade **VVS 2**
Depth **68.9%**
Table **65%**
Girdle **Medium**
Culet **Long**
Polish **EXCELLENT**
Symmetry **EXCELLENT**
Fluorescence **NONE**
Inscription(s) **IGI LG795689710**
Comments: This Laboratory Grown Diamond was created by Chemical Vapor Deposition (CVD) growth process.
Indications of post-growth treatment.