



ELECTRONIC COPY

LG795689655
Report verification at igi.org



May 7, 2026
IGI Report Number **LG795689655**
Description **LABORATORY GROWN DIAMOND**
Shape and Cutting Style **CUT CORNERED
RECTANGULAR MIXED CUT**
Measurements **9.87 X 6.67 X 4.66 MM**
GRADING RESULTS
Carat Weight **3.01 CARATS**
Color Grade **FANCY INTENSE PINK**
Clarity Grade **VVS 2**

May 7, 2026
IGI Report Number **LG795689655**
Description **LABORATORY GROWN DIAMOND**
Shape and Cutting Style **CUT CORNERED RECTANGULAR
MIXED CUT**
Measurements **9.87 X 6.67 X 4.66 MM**

GRADING RESULTS

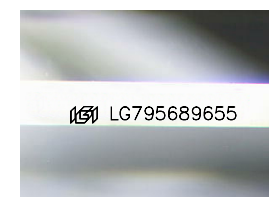
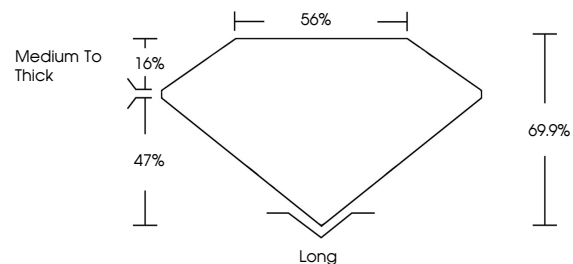
Carat Weight **3.01 CARATS**
Color Grade **FANCY INTENSE PINK**
Clarity Grade **VVS 2**

ADDITIONAL GRADING INFORMATION

Polish **EXCELLENT**
Symmetry **EXCELLENT**
Fluorescence **SLIGHT**
Inscription(s) **IGI LG795689655**

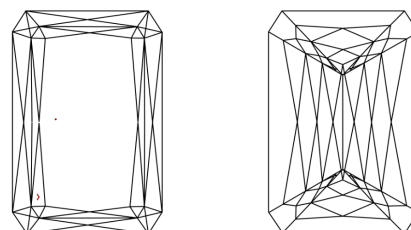
Comments: This Laboratory Grown Diamond was created by Chemical Vapor Deposition (CVD) growth process. Indications of post-growth treatment.

PROPORTIONS



Sample Image Used

CLARITY CHARACTERISTICS



KEY TO SYMBOLS

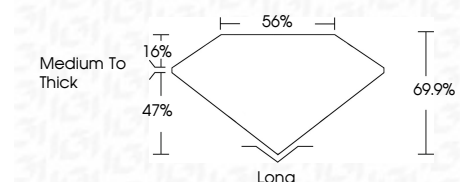
Red symbols indicate internal characteristics.
Green symbols indicate external characteristics.

COLOR

D E F G H I J Faint Very Light Light

CLARITY

FL	IF	VVS ¹⁻²	VS ¹⁻²	SI ¹⁻²	I ¹⁻³
Flawless	Internally Flawless	Very Very Slightly Included	Very Slightly Included	Slightly Included	Included



ADDITIONAL GRADING INFORMATION

Polish **EXCELLENT**
Symmetry **EXCELLENT**
Fluorescence **SLIGHT**
Inscription(s) **IGI LG795689655**
Comments: This Laboratory Grown Diamond was created by Chemical Vapor Deposition (CVD) growth process. Indications of post-growth treatment.



May 7, 2026
IGI Report No **LG795689655**
CUT CORNERED RECT. MIXED CUT
3.01 CARATS
Carat Weight
FANCY INTENSE PINK
Color Grade
VVS 2
Clarity Grade
69.9%
Depth
56%
Table
Medium to Thick
Girdle
Long
Culet
EXCELLENT
Polish
EXCELLENT
Symmetry
SLIGHT
Fluorescence
IGI LG795689655
Inscription(s)
Comments: This Laboratory Grown Diamond was created by Chemical Vapor Deposition (CVD) growth process. Indications of post-growth treatment.