



ELECTRONIC COPY

LABORATORY GROWN DIAMOND REPORT

May 2, 2026
IGI Report Number LG795689497
Description LABORATORY GROWN DIAMOND
Shape and Cutting Style CUT CORNERED RECTANGULAR MODIFIED BRILLIANT
Measurements 11.85 X 8.48 X 5.68 MM

GRADING RESULTS

Carat Weight 5.06 CARATS
Color Grade E
Clarity Grade VVS 2

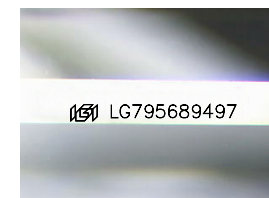
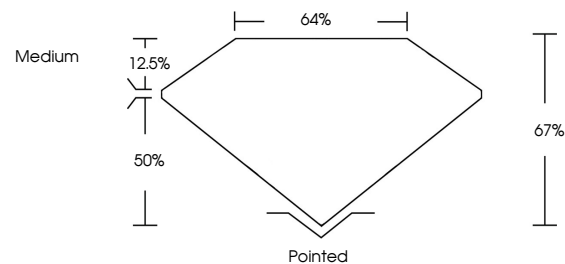
ADDITIONAL GRADING INFORMATION

Polish EXCELLENT
Symmetry EXCELLENT
Fluorescence NONE

Inscription(s) IGI LG795689497

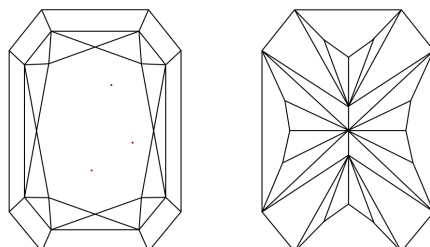
Comments: This Laboratory Grown Diamond was created by Chemical Vapor Deposition (CVD) growth process.
Type IIa

PROPORTIONS



Sample Image Used

CLARITY CHARACTERISTICS



KEY TO SYMBOLS

Red symbols indicate internal characteristics.
Green symbols indicate external characteristics.

COLOR

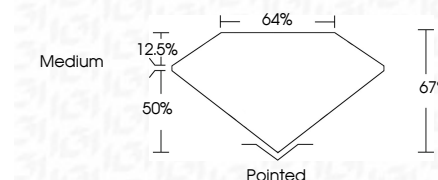
D E F G H I J Faint Very Light Light

CLARITY

FL IF VVS¹⁻² VS¹⁻² SI¹⁻² I¹⁻³
Flawless Internally Flawless Very Very Slightly Included Very Slightly Included Slightly Included Included



May 2, 2026
IGI Report Number LG795689497
Description LABORATORY GROWN DIAMOND
Shape and Cutting Style CUT CORNERED RECTANGULAR MODIFIED BRILLIANT
Measurements 11.85 X 8.48 X 5.68 MM
GRADING RESULTS
Carat Weight 5.06 CARATS
Color Grade E
Clarity Grade VVS 2



ADDITIONAL GRADING INFORMATION

Polish EXCELLENT
Symmetry EXCELLENT
Fluorescence NONE
Inscription(s) IGI LG795689497
Comments: This Laboratory Grown Diamond was created by Chemical Vapor Deposition (CVD) growth process.
Type IIa



May 2, 2026
IGI Report No LG795689497
CUT CORNERED RECT. MODIFIED BRILLIANT
11.85 X 8.48 X 5.68 MM
5.06 CARATS
E
VVS 2
67%
64%
Medium
Pointed
EXCELLENT
EXCELLENT
NONE
IGI LG795689497
Comments: This Laboratory Grown Diamond was created by Chemical Vapor Deposition (CVD) growth process.
Type IIa