



ELECTRONIC COPY

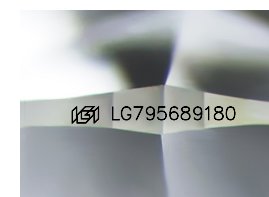
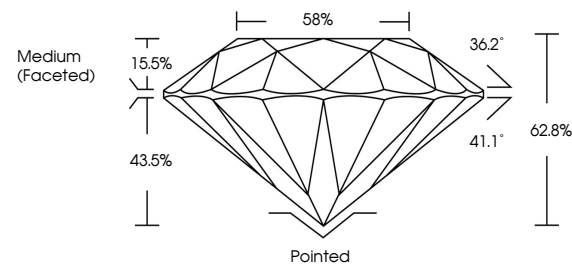
LG795689180
Report verification at igi.org



May 2, 2026
IGI Report Number LG795689180
Description LABORATORY GROWN DIAMOND
Shape and Cutting Style ROUND BRILLIANT
Measurements 6.52 - 6.57 X 4.11 MM
GRADING RESULTS
Carat Weight 1.09 CARAT
Color Grade E
Clarity Grade VVS 1
Cut Grade EXCELLENT

May 2, 2026
IGI Report Number LG795689180
Description LABORATORY GROWN DIAMOND
Shape and Cutting Style ROUND BRILLIANT
Measurements 6.52 - 6.57 X 4.11 MM

PROPORTIONS

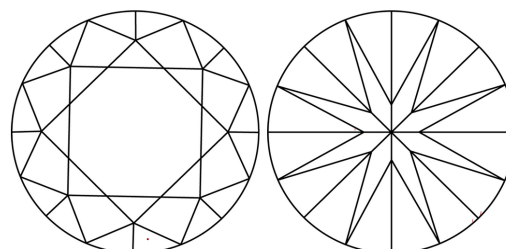


Sample Image Used

GRADING RESULTS

Carat Weight 1.09 CARAT
Color Grade E
Clarity Grade VVS 1
Cut Grade EXCELLENT

CLARITY CHARACTERISTICS



KEY TO SYMBOLS

Red symbols indicate internal characteristics.
Green symbols indicate external characteristics.

ADDITIONAL GRADING INFORMATION

Polish EXCELLENT
Symmetry EXCELLENT
Fluorescence NONE
Inscription(s) IGI LG795689180

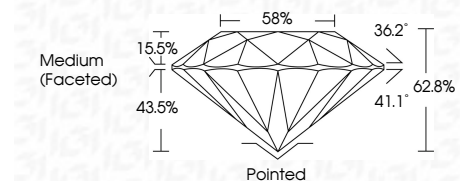
Comments: This Laboratory Grown Diamond was created by Chemical Vapor Deposition (CVD) growth process. Type IIa

COLOR

D E F G H I J Faint Very Light Light

CLARITY

FL IF VVS 1-2 VS 1-2 SI 1-2 I 1-3
Flawless Internally Flawless Very Very Slightly Included Very Slightly Included Slightly Included Included



ADDITIONAL GRADING INFORMATION

Polish EXCELLENT
Symmetry EXCELLENT
Fluorescence NONE
Inscription(s) IGI LG795689180
Comments: This Laboratory Grown Diamond was created by Chemical Vapor Deposition (CVD) growth process. Type IIa



May 2, 2026
IGI Report No LG795689180
ROUND BRILLIANT
6.52 - 6.57 X 4.11 MM
1.09 CARAT E
Color Grade EXCELLENT
Clarity Grade VVS 1
Depth 62.8%
Table 58%
Girdle Medium (Faceted)
Culet Pointed
Polish EXCELLENT
Symmetry EXCELLENT
Fluorescence NONE
Inscriptions(s) IGI LG795689180
Comments: This Laboratory Grown Diamond was created by Chemical Vapor Deposition (CVD) growth process. Type IIa