



ELECTRONIC COPY

LG795681792
Report verification at igi.org



June 18, 2026
IGI Report Number **LG795681792**
Description **LABORATORY GROWN DIAMOND**
Shape and Cutting Style **ANTIQUÉ CUSHION CUT**
Measurements **12.15 X 8.64 X 5.95 MM**
GRADING RESULTS
Carat Weight **5.06 CARATS**
Color Grade **LIGHT PINKISH BROWN**
Clarity Grade **VS 1**

June 18, 2026
IGI Report Number **LG795681792**
Description **LABORATORY GROWN DIAMOND**
Shape and Cutting Style **ANTIQUÉ CUSHION CUT**
Measurements **12.15 X 8.64 X 5.95 MM**

GRADING RESULTS

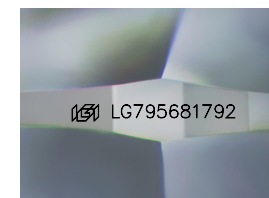
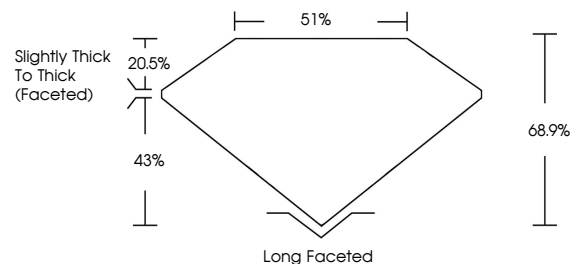
Carat Weight **5.06 CARATS**
Color Grade **LIGHT PINKISH BROWN**
Clarity Grade **VS 1**

ADDITIONAL GRADING INFORMATION

Polish **EXCELLENT**
Symmetry **EXCELLENT**
Fluorescence **VERY SLIGHT**
Inscription(s) **IGI LG795681792**

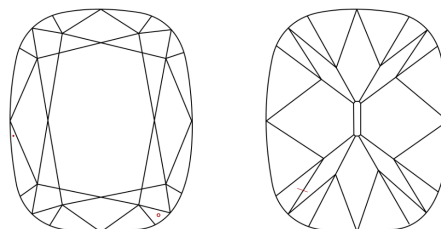
Comments: This Laboratory Grown Diamond was created by Chemical Vapor Deposition (CVD) growth process.
Type IIa

PROPORTIONS



Sample Image Used

CLARITY CHARACTERISTICS



KEY TO SYMBOLS

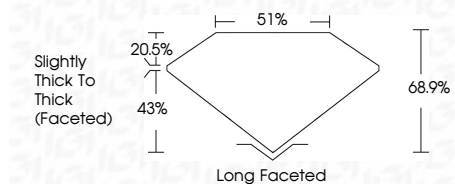
Red symbols indicate internal characteristics.
Green symbols indicate external characteristics.

COLOR

D E F G H I J Faint Very Light Light

CLARITY

FL	IF	VS ¹⁻²	VS ¹⁻²	SI ¹⁻²	I ¹⁻³
Flawless	Internally Flawless	Very Very Slightly Included	Very Slightly Included	Slightly Included	Included



ADDITIONAL GRADING INFORMATION

Polish **EXCELLENT**
Symmetry **EXCELLENT**
Fluorescence **VERY SLIGHT**
Inscription(s) **IGI LG795681792**
Comments: This Laboratory Grown Diamond was created by Chemical Vapor Deposition (CVD) growth process.
Type IIa



June 18, 2026
IGI Report No. LG795681792
ANTIQUÉ CUSHION CUT
12.15 X 8.64 X 5.95 MM
Carat Weight **5.06 CARATS**
Color Grade **LIGHT PINKISH BROWN**
Clarity Grade **VS 1**
Depth **68.9%**
Table **51%**
Girdle **Slightly Thick To Thick (Faceted)**
Culet **Long Faceted**
Polish **EXCELLENT**
Symmetry **EXCELLENT**
Fluorescence **VERY SLIGHT**
Inscription(s) **IGI LG795681792**
Comments: This Laboratory Grown Diamond was created by Chemical Vapor Deposition (CVD) growth process.
Type IIa