



ELECTRONIC COPY

LG795677075
Report verification at igi.org



April 28, 2026

IGI Report Number LG795677075

Description LABORATORY GROWN DIAMOND

Shape and Cutting Style CUSHION MODIFIED BRILLIANT

Measurements 8.75 X 7.10 X 4.64 MM

GRADING RESULTS

Carat Weight 2.18 CARATS

Color Grade E

Clarity Grade VVS 2

Cut Grade EXCELLENT

LABORATORY GROWN DIAMOND REPORT

April 28, 2026

IGI Report Number LG795677075

Description LABORATORY GROWN DIAMOND

Shape and Cutting Style CUSHION MODIFIED BRILLIANT

Measurements 8.75 X 7.10 X 4.64 MM

GRADING RESULTS

Carat Weight 2.18 CARATS

Color Grade E

Clarity Grade VVS 2

Cut Grade EXCELLENT

ADDITIONAL GRADING INFORMATION

Polish EXCELLENT

Symmetry EXCELLENT

Fluorescence NONE

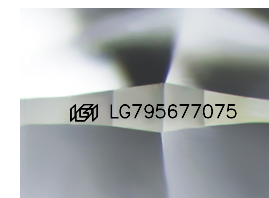
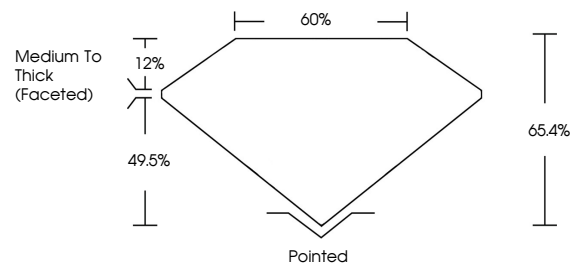
Inscription(s) IGI LG795677075

Comments: As Grown - No indication of post-growth treatment.

This Laboratory Grown Diamond was created by High Pressure High Temperature (HPHT) growth process.

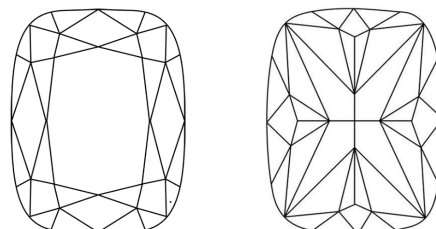
Type II

PROPORTIONS



Sample Image Used

CLARITY CHARACTERISTICS



KEY TO SYMBOLS

Red symbols indicate internal characteristics. Green symbols indicate external characteristics.

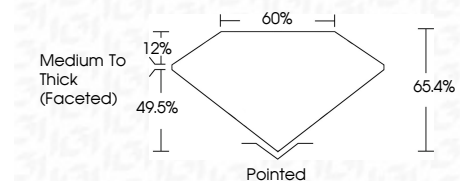
COLOR

D E F G H I J Faint Very Light Light

CLARITY

FL IF VVS 1-2 VS 1-2 SI 1-2 I 1-3

Flawless Internally Flawless Very Very Slightly Included Very Slightly Included Slightly Included Included



ADDITIONAL GRADING INFORMATION

Polish EXCELLENT

Symmetry EXCELLENT

Fluorescence NONE

Inscription(s) IGI LG795677075

Comments: As Grown - No indication of post-growth treatment.

This Laboratory Grown Diamond was created by High Pressure High Temperature (HPHT) growth process.

Type II



IGI



April 28, 2026
IGI Report No LG795677075
CUSHION MODIFIED BRILLIANT
8.75 X 7.10 X 4.64 MM
2.18 CARATS
E
EXCELLENT
VVS 2
66.4%
60%
Medium To Thick (Faceted)
Pointed
EXCELLENT
EXCELLENT
NONE
IGI LG795677075
Comments: As Grown - No indication of post-growth treatment. This Laboratory Grown Diamond was created by High Pressure High Temperature (HPHT) growth process. Type II