



April 28, 2026

IGI Report Number **LG795676937**

MARQUISE BRILLIANT

LABORATORY GROWN DIAMOND

9.66 X 4.99 X 3.12 MM

Carat Weight **0.87 CARAT**

Color Grade **D**

Clarity Grade **VVS 1**

Polish **EXCELLENT**

Symmetry **EXCELLENT**

Fluorescence **NONE**

Inscription(s) **IGI LG795676937**

Comments: As Grown - No indication of post-growth treatment. This Laboratory Grown Diamond was created by High Pressure High Temperature (HPHT) growth process. Type II

LABORATORY GROWN DIAMOND REPORT

April 28, 2026

IGI Report Number

LG795676937

Description

LABORATORY GROWN DIAMOND

Shape and Cutting Style

MARQUISE BRILLIANT

Measurements

9.66 X 4.99 X 3.12 MM

GRADING RESULTS

Carat Weight

0.87 CARAT

Color Grade

D

Clarity Grade

VVS 1

ADDITIONAL GRADING INFORMATION

Polish

EXCELLENT

Symmetry

EXCELLENT

Fluorescence

NONE

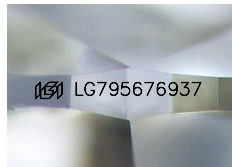
Inscription(s)

IGI LG795676937

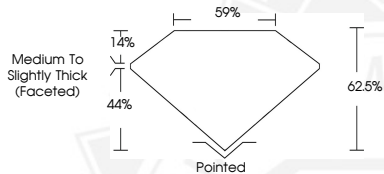
Comments: As Grown - No indication of post-growth treatment.

This Laboratory Grown Diamond was created by High Pressure High Temperature (HPHT) growth process.

Type II



Sample Image Used



April 28, 2026

IGI Report Number **LG795676937**

MARQUISE BRILLIANT

LABORATORY GROWN DIAMOND

9.66 X 4.99 X 3.12 MM

Carat Weight **0.87 CARAT**

Color Grade **D**

Clarity Grade **VVS 1**

Polish **EXCELLENT**

Symmetry **EXCELLENT**

Fluorescence **NONE**

Inscription(s) **IGI LG795676937**

Comments: As Grown - No indication of post-growth treatment. This Laboratory Grown Diamond was created by High Pressure High Temperature (HPHT) growth process. Type II



THIS DOCUMENT WAS PRODUCED WITH THE FOLLOWING SECURITY MEASURES: SPECIAL DOCUMENT PAPER, INK SCREENS, WATERMARK, BACKGROUND DESIGNS, HOLOGRAM AND OTHER SECURITY FEATURES NOT LISTED AND DO EXCEED DOCUMENT SECURITY INDUSTRY GUIDELINES.