



**ELECTRONIC COPY**

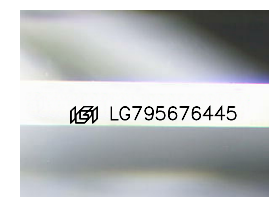
LG795676445  
Report verification at igi.org



April 29, 2026  
IGI Report Number **LG795676445**  
Description **LABORATORY GROWN DIAMOND**

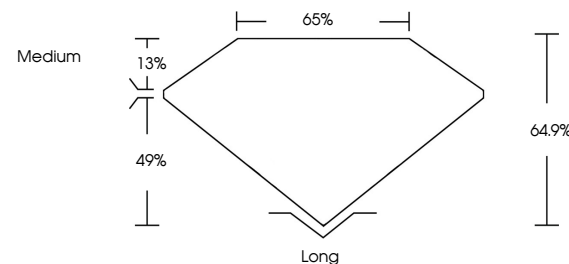
Shape and Cutting Style **EMERALD CUT**  
Measurements **15.77 X 10.89 X 7.07 MM**

**GRADING RESULTS**  
Carat Weight **11.78 CARATS**  
Color Grade **E**  
Clarity Grade **VVS 2**

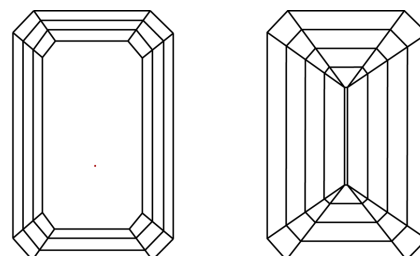


Sample Image Used

**PROPORTIONS**



**CLARITY CHARACTERISTICS**



**KEY TO SYMBOLS**

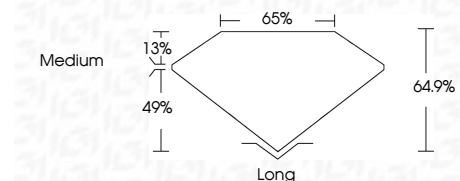
Red symbols indicate internal characteristics.  
Green symbols indicate external characteristics.

**COLOR**

D E F G H I J Faint Very Light Light

**CLARITY**

FL	IF	VVS <sup>1-2</sup>	VS <sup>1-2</sup>	SI <sup>1-2</sup>	I <sup>1-3</sup>
Flawless	Internally Flawless	Very Very Slightly Included	Very Slightly Included	Slightly Included	Included



**ADDITIONAL GRADING INFORMATION**

Polish **EXCELLENT**  
Symmetry **EXCELLENT**  
Fluorescence **NONE**  
Inscription(s) **IGI LG795676445**  
Comments: This Laboratory Grown Diamond was created by Chemical Vapor Deposition (CVD) growth process. Type IIa



**IGI**



April 29, 2026  
IGI Report No. LG795676445  
**EMERALD CUT**  
15.77 X 10.89 X 7.07 MM  
Carat Weight **11.78 CARATS**  
Color Grade **E**  
Clarity Grade **VVS 2**  
Depth **64.9%**  
Table **65%**  
Girdle **Medium**  
Culet **Long**  
Polish **EXCELLENT**  
Symmetry **EXCELLENT**  
Fluorescence **NONE**  
Inscription(s) **IGI LG795676445**  
Comments: This Laboratory Grown Diamond was created by Chemical Vapor Deposition (CVD) growth process. Type IIa