



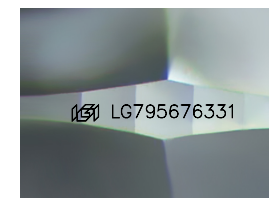
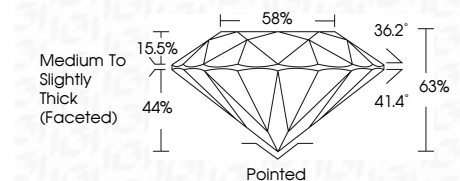
ELECTRONIC COPY

LG795676331
Report verification at igi.org



April 27, 2026
IGI Report Number LG795676331
Description LABORATORY GROWN DIAMOND
Shape and Cutting Style ROUND BRILLIANT
Measurements 6.40 - 6.45 X 4.04 MM

GRADING RESULTS
Carat Weight 1.02 CARAT
Color Grade E
Clarity Grade VS 1
Cut Grade EXCELLENT



Sample Image Used

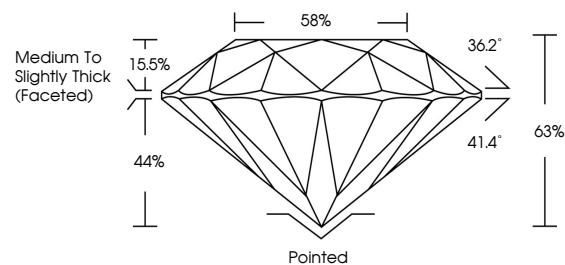
ADDITIONAL GRADING INFORMATION
Polish EXCELLENT
Symmetry EXCELLENT
Fluorescence NONE
Inscription(s) IGI LG795676331
Comments: This Laboratory Grown Diamond was created by Chemical Vapor Deposition (CVD) growth process. Type IIa



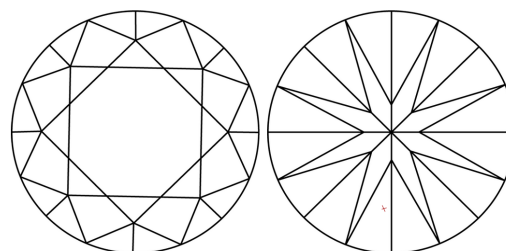
April 27, 2026
IGI Report No LG795676331
ROUND BRILLIANT
1.02 CARAT E
6.40 - 6.45 X 4.04 MM
Carat Weight 1.02 CARAT
Color Grade E
Clarity Grade VS 1
Cut Grade EXCELLENT
Depth 65%
Table 86%
Girdle Medium To Slightly Thick (Faceted)
Culet Pointed
Polish EXCELLENT
Symmetry EXCELLENT
Fluorescence NONE
Inscription(s) IGI LG795676331
Comments: This Laboratory Grown Diamond was created by Chemical Vapor Deposition (CVD) growth process. Type IIa



PROPORTIONS



CLARITY CHARACTERISTICS



KEY TO SYMBOLS

Red symbols indicate internal characteristics.
Green symbols indicate external characteristics.

COLOR

D E F G H I J Faint Very Light Light

CLARITY

FL IF VS 1-2 VS 2-3 SI 1-2 I 1-3
Flawless Internally Flawless Very Very Slightly Included Very Slightly Included Slightly Included Included