



ELECTRONIC COPY

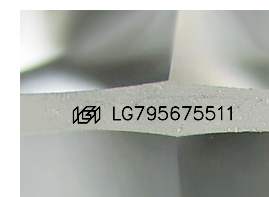
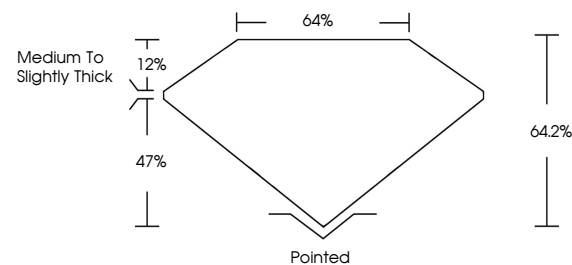
LG795675511
Report verification at igi.org



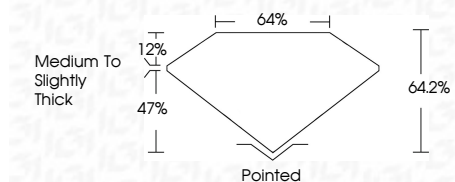
April 30, 2026
IGI Report Number LG795675511
Description LABORATORY GROWN DIAMOND
Shape and Cutting Style HEXAGONAL MODIFIED BRILLIANT
Measurements 14.48 X 8.99 X 5.77 MM
GRADING RESULTS
Carat Weight 5.06 CARATS
Color Grade FANCY INTENSE YELLOW
Clarity Grade VS 2

April 30, 2026
IGI Report Number LG795675511
Description LABORATORY GROWN DIAMOND
Shape and Cutting Style HEXAGONAL MODIFIED BRILLIANT
Measurements 14.48 X 8.99 X 5.77 MM

PROPORTIONS



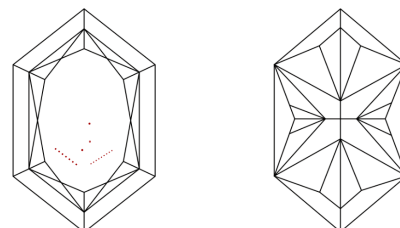
Sample Image Used



GRADING RESULTS

Carat Weight 5.06 CARATS
Color Grade FANCY INTENSE YELLOW
Clarity Grade VS 2

CLARITY CHARACTERISTICS



KEY TO SYMBOLS

Red symbols indicate internal characteristics.
Green symbols indicate external characteristics.

ADDITIONAL GRADING INFORMATION

Polish EXCELLENT
Symmetry EXCELLENT
Fluorescence NONE
Inscription(s) LG795675511

ADDITIONAL GRADING INFORMATION

Polish EXCELLENT
Symmetry EXCELLENT
Fluorescence NONE
Inscription(s) LG795675511
Comments: This Laboratory Grown Diamond was created by Chemical Vapor Deposition (CVD) growth process.

COLOR

D E F G H I J Faint Very Light Light

CLARITY

FL IF VS 1-2 VS 1-2 SI 1-2 I 1-3
Flawless Internally Flawless Very Very Slightly Included Very Slightly Included Slightly Included Included



April 30, 2026
IGI Report No LG795675511
HEXAGONAL MODIFIED BRILLIANT
5.06 CARATS
FANCY INTENSE YELLOW
VS 2
14.48 X 8.99 X 5.77 MM
Medium to Slightly Thick
Pointed
EXCELLENT
EXCELLENT
NONE
LG795675511
Comments: This Laboratory Grown Diamond was created by Chemical Vapor Deposition (CVD) growth process.