



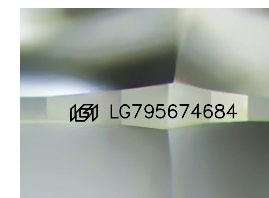
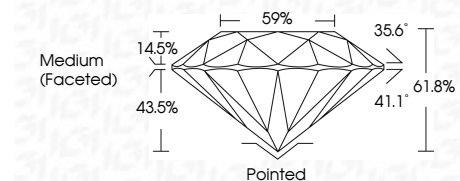
ELECTRONIC COPY

LG795674684
Report verification at igi.org



May 9, 2026
IGI Report Number **LG795674684**
Description **LABORATORY GROWN DIAMOND**
Shape and Cutting Style **ROUND BRILLIANT**
Measurements **7.28 - 7.33 X 4.51 MM**

GRADING RESULTS
Carat Weight **1.50 CARAT**
Color Grade **F**
Clarity Grade **VS 2**
Cut Grade **IDEAL**



Sample Image Used

ADDITIONAL GRADING INFORMATION
Polish **EXCELLENT**
Symmetry **VERY GOOD**
Fluorescence **NONE**
Inscription(s) **IGI LG795674684**
Comments: This Laboratory Grown Diamond was created by Chemical Vapor Deposition (CVD) growth process. Type IIa

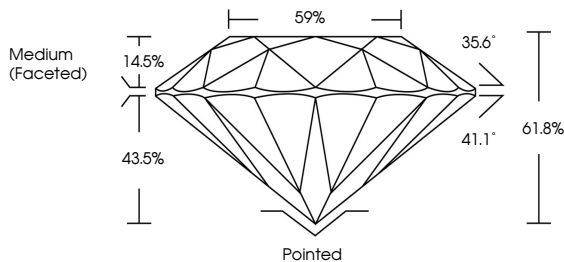


May 9, 2026
IGI Report No **LG795674684**
ROUND BRILLIANT
7.28 - 7.33 X 4.51 MM
1.50 CARAT
Color Grade **F**
Clarity Grade **VS 2**
Cut Grade **IDEAL**
Depth **61.8%**
Table **59%**
Medium (Faceted)
Culet **Pointed**
Polish **EXCELLENT**
Symmetry **VERY GOOD**
Fluorescence **NONE**
Inscription(s) **IGI LG795674684**
Comments: This Laboratory Grown Diamond was created by Chemical Vapor Deposition (CVD) growth process. Type IIa

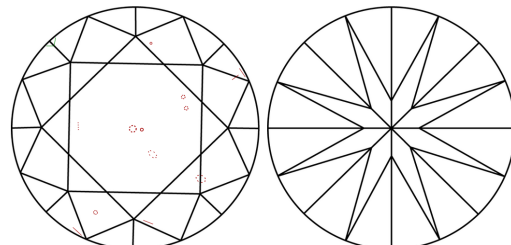


© IGI 2020, International Gemological Institute FD - 10 20

PROPORTIONS



CLARITY CHARACTERISTICS



KEY TO SYMBOLS
Red symbols indicate internal characteristics.
Green symbols indicate external characteristics.

COLOR

D	E	F	G	H	I	J	Faint	Very Light	Light
---	---	---	---	---	---	---	-------	------------	-------

CLARITY

FL	IF	VS ¹⁻²	VS ¹⁻²	SI ¹⁻²	I ¹⁻³
Flawless	Internally Flawless	Very Very Slightly Included	Very Slightly Included	Slightly Included	Included